

### Product Overview

NCA8240 is an octal buffer/driver used for improving driver ability of bus-oriented receivers and transmitters, clock drivers etc. and ensuring the accuracy of signal timing. It provides four channels in each direction with separate output-enable(/OE) input that low active. When /OE is active, NCA8240 transmits data from A to Y. When /OE is high, the outputs are in the high-impedance state. During power up and power down, /OE should be tied to VCC through a pull-up resistor to ensure the high impedance state.

NCA8240 can tolerate up to 6V input voltage and each channel supports maximum 32 mA current drive. All unused inputs must be held at V<sub>CC</sub> or GND to prevent excess supply current.

### Key Features

- Qualified for Automotive Grade 1 applications:  
     NCA8240-Q1TSTR
- Inputs are TTL compatible
- Power supply voltage: 3V to 6V
- 6 V Tolerant Inputs
- ESD Protection Exceeds JESD 22
  - 4000V Human-Body Model
  - 2000V Charged-Device Model
- Operation temperature: -40°C~125°C
- RoHS & REACH compliant packages: TSSOP20

### Applications

- Motor driver
- Traction inverter
- I/O modules
- LED displays

### Device Information

Part Number	Package	Body Size
NCA8240-DTSTR	TSSOP20	6.50mm × 4.50mm
NCA8240-Q1TSTR	TSSOP20	6.50mm × 4.50mm

### Functional Block Diagrams

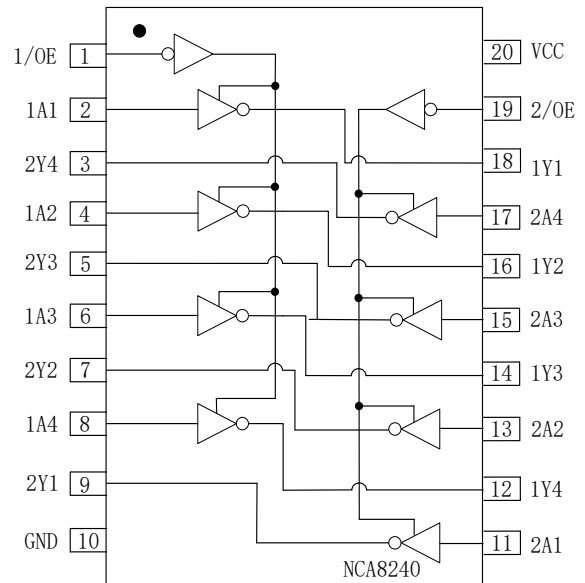


Figure 1. NCA8240 Block Diagram

## INDEX

1. PIN CONFIGURATION AND FUNCTIONS.....	3
2. ABSOLUTE MAXIMUM RATINGS .....	4
3. ESD RATINGS .....	4
4. RECOMMENDED OPERATING CONDITIONS.....	4
5. THERMAL INFORMATION .....	5
6. SPECIFICATIONS .....	5
6.1. ELECTRICAL CHARACTERISTICS .....	5
6.2. DYNAMIC CHARACTERISTICS .....	6
6.3. PARAMETER MEASUREMENT INFORMATION.....	6
7. FUNCTION DESCRIPTION .....	7
7.1. OVERVIEW .....	7
8. APPLICATION NOTE.....	7
8.1. APPLICATION INFORMATION .....	7
8.2. TYPICAL APPLICATION CIRCUIT.....	7
9. PACKAGE INFORMATION .....	8
10. ORDERING INFORMATION .....	8
11. TAPE AND REEL INFORMATION .....	9
12. REVISION HISTORY .....	10

# 1. Pin Configuration and Functions

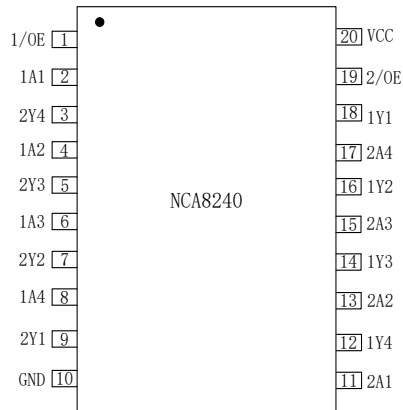


Figure 1.1 NCA8240 Package

Table 1.1 NCA8240 Pin Configuration and Description

<b>NCA8240 PIN NO.</b>	<b>SYMBOL</b>	<b>FUNCTION</b>
1	1/OE	1 Active low Output enable
2	1A1	Input of 1Y1
3	2Y4	Output of 2A4
4	1A2	Input of 1Y2
5	2Y3	Output of 2Y3
6	1A3	Input of 1Y3
7	2Y2	Output of 2A2
8	1A4	Input of 1Y4
9	2Y1	Output of 2A1
10	GND	Ground
11	2A1	Input of 2Y1
12	1Y4	Output of 1A4
13	2A2	Input of 2Y2
14	1Y3	Output of 1A3
15	2A3	Input of 2Y3
16	1Y2	Output of 1A2
17	2A4	Input of 2Y4
18	1Y1	Output of 1A1
19	2/OE	2 Active low Output enable
20	V <sub>cc</sub>	Power

## 2. Absolute Maximum Ratings

Parameters	Symbol	Min	Typ	Max	Unit	Comments
Power Supply Voltage	$V_{CC}$	-0.5		7	V	
Maximum Input Voltage	$V_I$	-0.5		7	V	
Maximum Output Voltage	$V_O$	-0.5		7	V	
Input clamp current	$I_{IK}$	-20			mA	$V_I < 0$
Output clamp current	$I_{OK}$	-20			mA	$V_O < 0$
Continuous output current	$I_O$	-50		50	mA	$V_O=0$ to $V_{CC}$
Ambient Temperature	$T_a$	-40		125	°C	
Junction Temperature	$T_J$			150	°C	
Storage Temperature	$T_{stg}$	-65		150	°C	

## 3. ESD Ratings

Parameters	Ratings	Value	Unit
Electrostatic discharge	Human body model (HBM), per AEC-Q100-002-RevD	±4.0	kV
	Charged device model (CDM), per AEC-Q100-011-RevB	±2.0	kV

## 4. Recommended Operating Conditions

Over recommended operating free-air temperature range (unless otherwise noted)<sup>(1)</sup>

Parameters	Symbol	Min	Typ	Max	Unit	Comments
Power Supply Voltage	$V_{CC}$	3	5	6	V	
High-level input voltage	$V_{IH}$	2			V	$V_{CC}=3V$ to $5.5V$ , NCA8240-DTSTR
		2.3			V	$V_{CC}=6V$ , NCA8240-DTSTR
		$V_{CC} \cdot 0.7$			V	NCA8240-Q1TSTR
Low-level input voltage	$V_{IL}$			0.8	V	NCA8240-DTSTR
				$V_{CC} \cdot 0.3$	V	NCA8240-Q1TSTR
High-level output current	$I_{OH}$	-32			mA	$V_{CC}=4.5V$ to $6V$
Low-level output current	$I_{OL}$			32	mA	$V_{CC}=4.5V$ to $6V$
Input transition rise or fall rate	$\Delta t/\Delta v$			8	ns/V	

(1) All unused inputs of the device must be held at  $V_{CC}$  or GND to ensure proper device operation.

## 5. Thermal Information

Parameters	Symbol	TSSOP20	Unit
Junction-to-ambient thermal resistance	$R_{\theta JA}$	103	$^{\circ}C/W$
Junction-to-case(top) thermal resistance	$R_{\theta JC (top)}$	37.7	$^{\circ}C/W$
Junction-to-board thermal resistance	$R_{\theta JB}$	54	$^{\circ}C/W$
Junction-to- top characterization parameter	$\Psi_{JT}$	6.8	$^{\circ}C/W$
Junction-to- board characterization parameter	$\Psi_{JB}$	65.1	$^{\circ}C/W$

## 6. Specifications

### 6.1. Electrical Characteristics

( $V_{CC}=3V\sim 6V$ ,  $T_a=-40^{\circ}C$  to  $125^{\circ}C$ . Unless otherwise noted, Typical values are at  $T_a = 25^{\circ}C$ )

Parameters	Symbol	Min	Typ	Max	Unit	Comments
Supply current	$I_{CC}$			80	$\mu A$	$V_{CC}=6V$ , $V_I = V_{CC}$ or GND, $I_O = 0$
Increasing supply current <sup>(1)</sup>	$\Delta I_{CC}$			1.5	mA	One input at 3.4 V, Other inputs at GND or $V_{CC}$ , $V_{CC}=4.5\sim 6V$
High-level output voltage	$V_{OH}$	2.5			V	$V_{CC}=4.5V$ , $I_{OH}=-3mA$
		2			V	$V_{CC} =5V$ , $I_{OH}=-24mA$
		2			V	$V_{CC}=5V$ , $I_{OH}=-32mA$
Low-level output voltage	$V_{OL}$			0.55	V	$V_{CC} =5V$ , $I_{OL}=24mA$
				0.55	V	$V_{CC}=5V$ , $I_{OL}=32mA$
Three-state output current	$I_{OZ}$	-10		10	$\mu A$	$V_{CC}=6V$ , $V_O = V_{CC}$ or GND
Input current	$I_I$	-1		1	$\mu A$	$V_{CC}=6V$ , $V_I = V_{CC}$ or GND
Input capacitance	$C_i$		4.5		pF	Guaranteed by design
Output capacitance	$C_o$		8		pF	Guaranteed by design

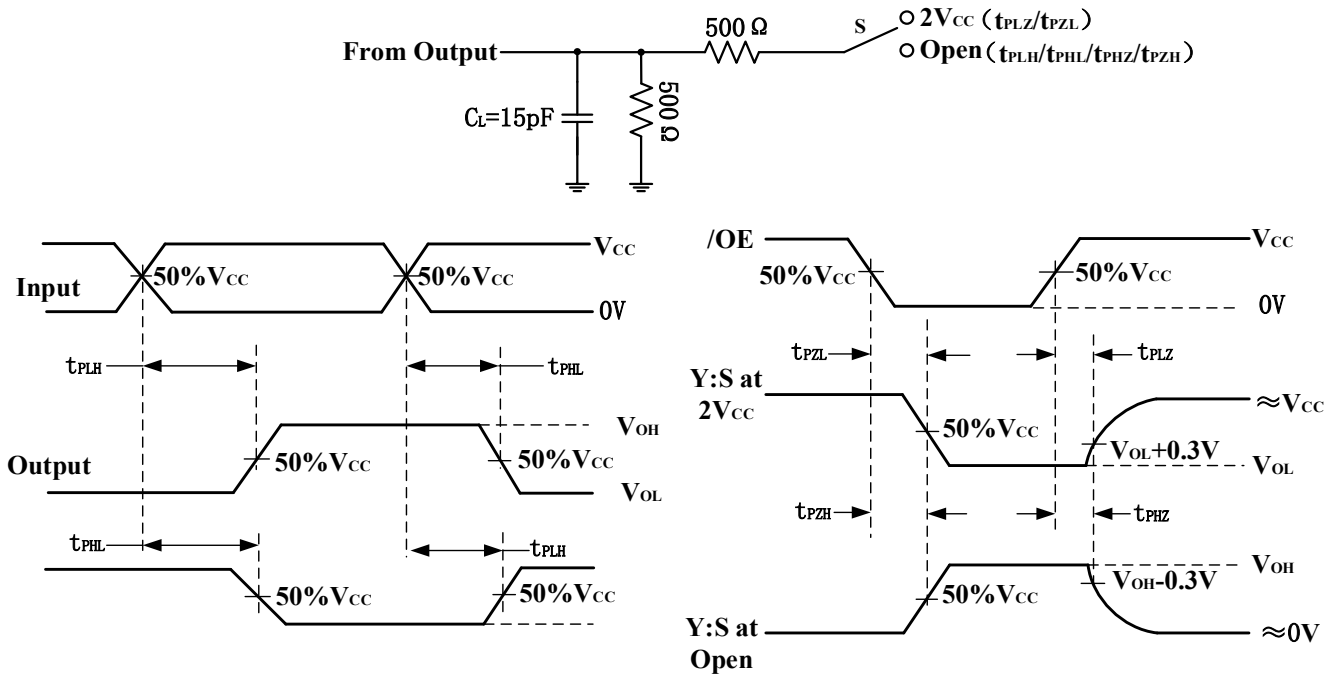
(1) The increase in supply current for each input that is at one of the specified TTL voltage levels, rather than 0V or  $V_{CC}$ .

### 6.2. Dynamic Characteristics

( $V_{CC}=3V\sim 6V$ ,  $T_a=-40^{\circ}C$  to  $125^{\circ}C$ . Unless otherwise noted, Typical values are at  $T_a = 25^{\circ}C$ )

Parameters	Symbol	Min	Typ	Max	Unit	Comments
Propagation Delay	$t_{PLH}$		8	15	ns	See <a href="#">figure 1</a>
	$t_{PHL}$		7	15	ns	
Enable to Data high Valid	$t_{PZH}$		7	15	ns	
Enable to Data Low Valid	$t_{PZL}$		7	15	ns	
Disable high to tri-state	$t_{PHZ}$		8	15	ns	
Disable low to tri-state	$t_{PLZ}$		7.5	15	ns	

### 6.3. Parameter measurement information



Note:

- 1) All input pulses with the following characteristics:  $PRR \leq 1MHz$ ,  $ZO = 50 \Omega$ ,  $t_r \leq 2.5ns$ ,  $t_f \leq 2.5ns$ ;
- 2)  $C_L$  includes probe and test-fixture capacitance.

Figure 6.1 Load Circuit and Voltage Waveforms for NCA8240

## 7. Function Description

### 7.1. Overview

NCA8240 is an octal buffer used for improving driver ability of 3-state memory address, clock drivers, and bus-oriented receivers and transmitters and ensuring the accuracy of signal timing. It provides four channels in each direction with separate output-enable(/OE) inputs low active. When /OE is active, NCA8240 transmits data from A to Y. When /OE is high, the outputs are in the high-impedance state. During power up and power down, /OE should be tied to V<sub>CC</sub> through a pull-up resistor to ensure the high impedance state. All unused inputs of NCA8240 must be held at V<sub>CC</sub> or GND to prevent excess I<sub>CC</sub>.

Table 6.1 Function Table

A_IN <sup>(1)</sup>	/OE status	VCC status	Y_OUT	Comment
L	L	Ready	H	Normal operation.
H	L	Ready	L	
X	H	Ready	Z	Output Disabled, the output is high impedance.
X	X	Unready	Z	The output follows the same status with the input after V <sub>CC</sub> is powered on and output is enabled.

(1) L=Logic low; H=Logic high; X=Logic low or logic high.

## 8. Application Note

### 8.1. Application Information

The NCA8240 can be used in motor driver, traction inverter, IO modules and LED displays. The maximum output current can be up to 32 mA.

### 8.2. Typical Application Circuit

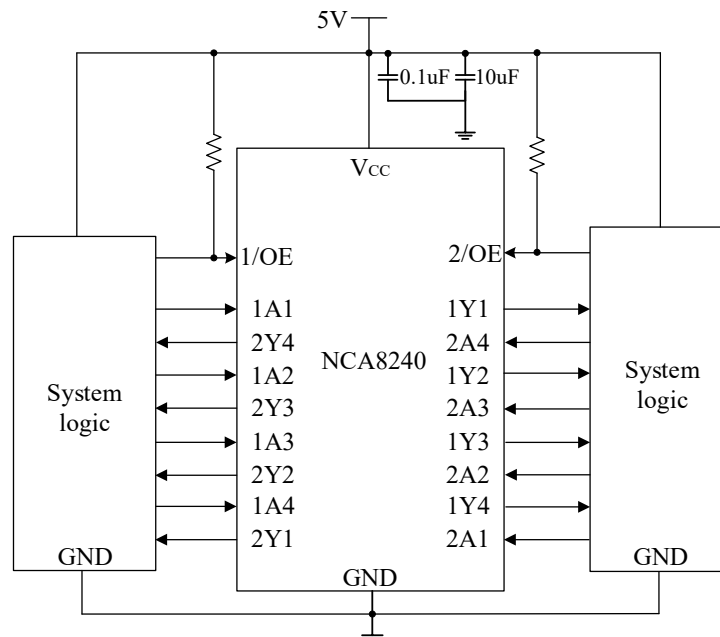
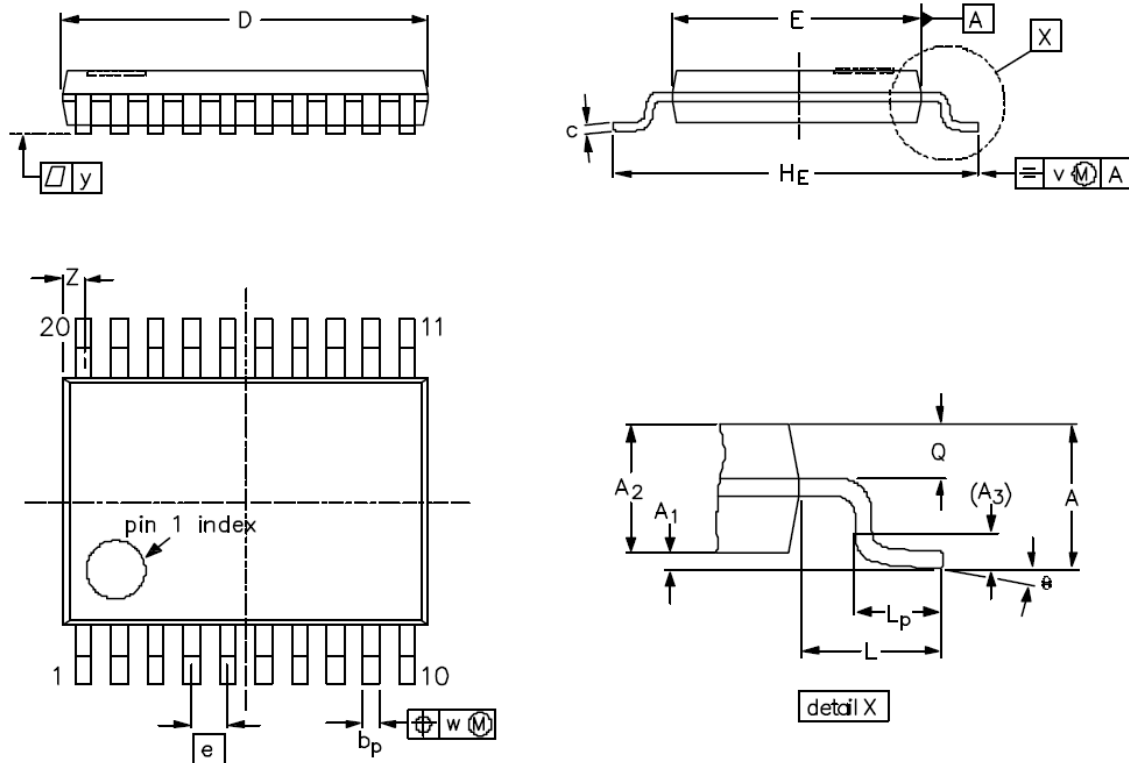


Figure 8.1 Typical application circuit for NCA8240

### 9. Package Information



DIMENSIONS (mm are the original dimensions)

UNIT	A <sub>max.</sub>	A <sub>1</sub>	A <sub>2</sub>	A <sub>3</sub>	b <sub>p</sub>	c	D <sup>(1)</sup>	E <sup>(2)</sup>	e	H <sub>E</sub>	L	L <sub>p</sub>	Q	v	w	y	Z <sup>(1)</sup>	θ
mm	1.10	0.15 0.05	0.95 0.80	0.25	0.30 0.19	0.2 0.1	6.6 6.4	4.5 4.3	0.65	6.6 6.2	1.0	0.75 0.50	0.4 0.3	0.2	0.13	0.1	0.5 0.2	8° 0°

Figure 9.1 TSSOP20 Package Shape and Dimension in millimeters

### 10. Ordering Information

Part Number	PINS	Temperature	MSL	Package Type	Package Drawing	SPQ
NCA8240-DTSTR	20	-40 to 125°C	1	TSSOP20	TSSOP20	2500
NCA8240-Q1TSTR	20	-40 to 125°C	1	TSSOP20	TSSOP20	2500

NOTE: All packages are RoHS-compliant with peak reflow temperatures of 260 °C according to the JEDEC industry standard classifications and peak solder temperatures.

# 11. Tape and Reel Information

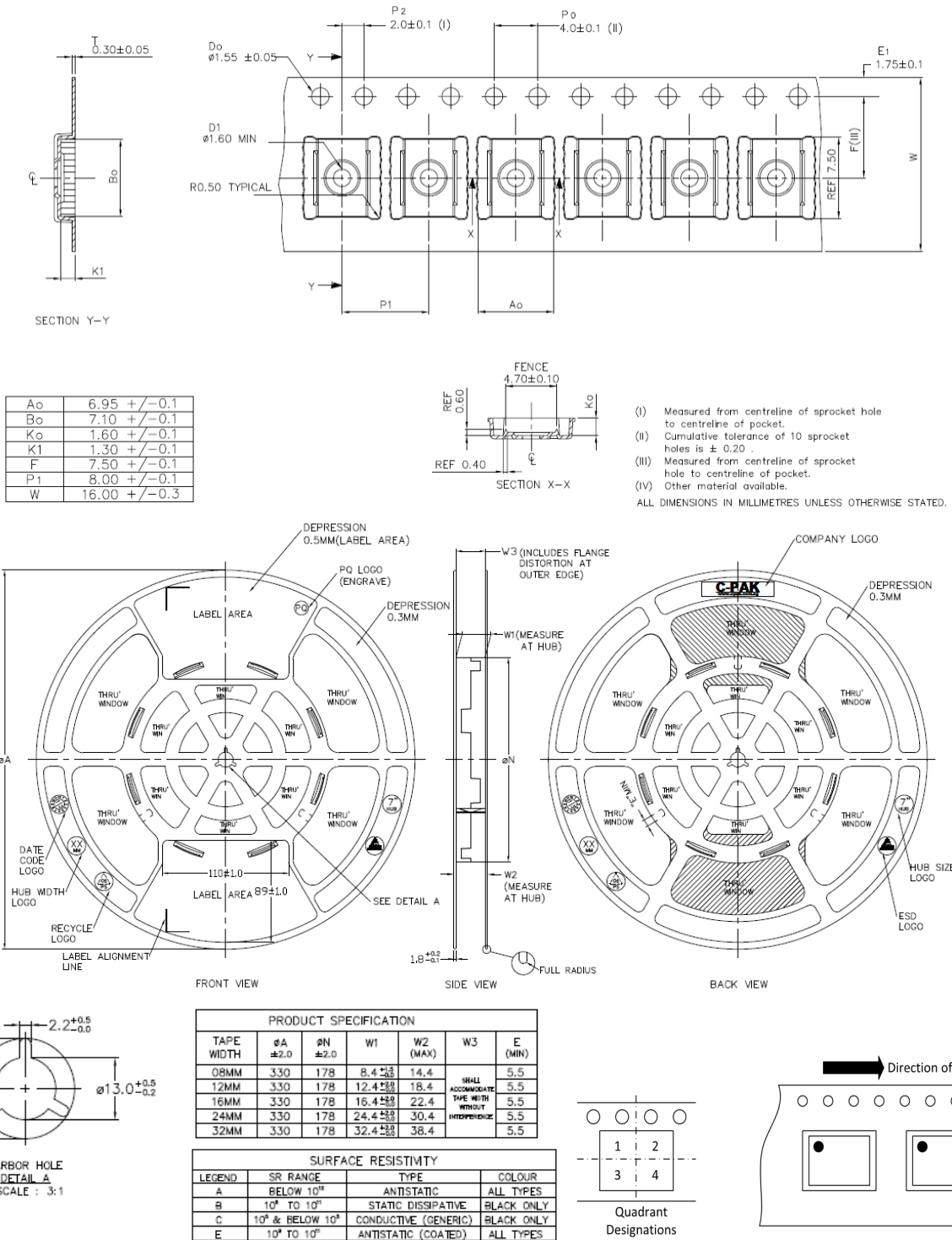


Figure 11.1 Tape and Reel Information of TSSOP

## 12. Revision History

Revision	Description	Date
1.0	Initial Version	2025/2/17

## **IMPORTANT NOTICE**

The information given in this document shall in no event be regarded as any warranty or authorization of, express or implied, including but not limited to accuracy, completeness, merchantability, fitness for a particular purpose or infringement of any third party's intellectual property rights.

You are solely responsible for your use of Novosense' products and applications, and for the safety thereof. You shall comply with all laws, regulations and requirements related to Novosense's products and applications, although information or support related to any application may still be provided by Novosense.

The resources are intended only for skilled developers designing with Novosense' products. Novosense reserves the rights to make corrections, modifications, enhancements, improvements or other changes to the products and services provided. Novosense authorizes you to use these resources exclusively for the development of relevant applications designed to integrate Novosense's products. Using these resources for any other purpose, or any unauthorized reproduction or display of these resources is strictly prohibited. Novosense shall not be liable for any claims, damages, costs, losses or liabilities arising out of the use of these resources.

For further information on applications, products and technologies, please contact Novosense ([www.novosns.com](http://www.novosns.com)).

**Suzhou Novosense Microelectronics Co., Ltd**