

Product Overview

The NCAB0104 is 4-bit directionless voltage level translator for push-pull applications. It includes two supply pins (V_{CCA} and V_{CCB}), one output-enable (OE) and two 4-bit I/O ports (An and Bn).

V_{CCA} pin accepts any supply voltage from 1.1 V to 3.6 V and V_{CCB} pin accepts any supply voltage from 1.65 V to 5.5 V such that V_{CCA} is no higher than V_{CCB} . It makes the device suitable for translating between any of the voltage nodes (1.8 V, 2.5 V, 3.3 V and 5.0 V).

The A and B ports (An and Bn) are designed to track V_{CCA} and V_{CCB} respectively. The pin OE is referenced to V_{CCA} . Setting pin OE low causes all outputs in the high-impedance state. Setting pin OE high will enable the device. To ensure the high-impedance state during power up or power down, the OE pin must be tied to the GND pin through a pull-down resistor; the minimum value of the resistor is determined by the current sourcing capability of the driver.

Key Features

- 1.1 V to 3.6 V on V_{CCA}
- 1.65 V to 5.5 V on V_{CCB} ($V_{CCA} \leq V_{CCB}$)
- Maximum data rates: 100 Mbps (push-pull)
- ESD protection exceeds JESD 22:
 - ± 8 kV HBM (A114) for A port
 - ± 15 kV HBM (A114) for B port
 - ± 2 kV CDM (C101) for A port
 - ± 2 kV CDM (C101) for B port
- IEC 61000-4-2 ESD (B port): ±15 kV Contact Discharge
- Latch-up performance exceeds 100 mA per JESD78, class II
- RoHS compliance
- Multiple package options

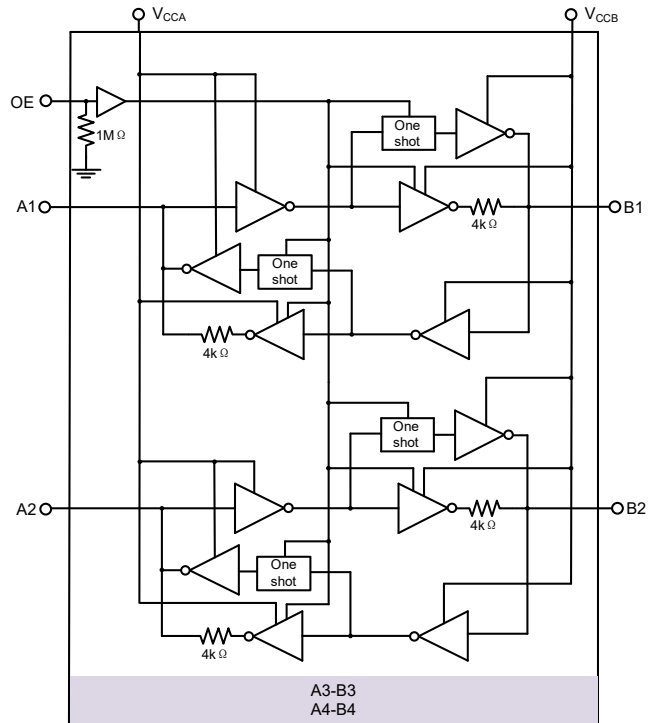
Applications

- Servers
- Routers (Telecom Switching Equipment)
- Personal Computers, Industrial, Automation
- Isolates and level translators between main processor and peripheral modules

Device Information

Part Number	Package	Body Size
NCAB0104-DQBDR	UQFN12	2.00mm × 1.70mm

Functional Block Diagram



INDEX

1. PIN CONFIGURATION AND FUNCTIONS	3
2. ABSOLUTE MAXIMUM RATINGS	4
3. ESD RATINGS	5
4. RECOMMENDED OPERATING CONDITIONS	6
5. THERMAL CHARACTERISTICS	6
6. SPECIFICATIONS	7
6.1. ELECTRICAL CHARACTERISTICS	7
6.2. TIMING REQUIREMENTS	9
6.3. SWITCHING CHARACTERISTICS	10
6.4. PARAMETER MEASUREMENT INFORMATION.....	22
7. FUNCTION DESCRIPTION	24
7.1. OVERVIEW	24
7.2. FUNCTIONAL BLOCK DIAGRAM	24
7.3. ARCHITECTURE	25
7.4. INPUT DRIVER REQUIREMENTS	26
7.5. POWER UP	26
7.6. DEVICE FUNCTIONAL MODES	26
7.7. ENABLE AND DISABLE	26
7.8. PULL-UP OR PULL-DOWN RESISTORS ON I/O LINES.....	26
8. TYPICAL APPLICATION	27
9. PACKAGE INFORMATION	28
10. ORDERING INFORMATION	29
11. TAPE AND REEL INFORMATION	30
12. REVISION HISTORY	31

1. Pin Configuration and Functions

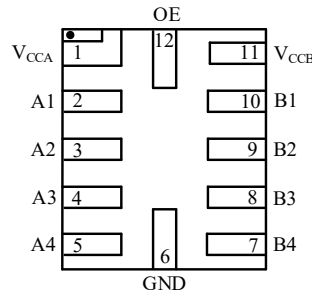


Figure 1. 1 NCAB0104 UQFN12 Package

Table 1. 1 Pin Configuration and Description of UQFN12

NCAB0104 PIN NO.	SYMBOL	FUNCTION
1	V _{CCA}	A-port supply voltage. $1.1\text{ V} \leq V_{CCA} \leq 3.6\text{ V}$ and $V_{CCA} \leq V_{CCB}$.
2/3/4/5	A1/A2/A3/A4	Input-output 1/2/3/4 for the A port (referenced to V _{CCA}).
6	GND	Ground
7/8/9/10	B4/B3/B2/B1	Input-output 4/3/2/1 for the B port (referenced to V _{CCB}).
11	V _{CCB}	B-port supply voltage. $1.65\text{ V} \leq V_{CCB} \leq 5.5\text{ V}$ and $V_{CCA} \leq V_{CCB}$.
12	OE	Output-enable pin (referenced to V _{CCA}). Active high. Set OE pin low to place all I/Os in high-impedance state.

2. Absolute Maximum Ratings

Over operating free-air temperature range (unless otherwise noted)^[1].

Parameters	Symbol	Min	Max	Unit	Comments
Supply voltage	V_{CCA}	-0.5	4.6	V	Reference to GND
	V_{CCB}	-0.5	6.5	V	Reference to GND
Input voltage	V_I	-0.5	4.6	V	A ports or OE
		-0.5	6.5	V	B ports
Output voltage	V_O	-0.5	$V_{CCA} + 0.5$	V	Active mode: A ports
		-0.5	$V_{CCB} + 0.5$	V	Active mode: B ports
		-0.5	4.6	V	3-state and power-down mode: A ports
		-0.5	6.5	V	3-state and power-down mode: B ports
Input clamp current	I_{IK}	-50	-	mA	$V_I < 0V$
Output clamp current	I_{OK}	-50	-	mA	$V_O < 0V$
Continuous output current	I_O	-50	50	mA	$V_O = 0V$ to V_{CCA} or V_{CCB}
Continuous current through supply	I_{CC}	-	100	mA	Current of V_{CCA} or V_{CCB}
Ground current	I_{GND}	-100	-	mA	Current of Ground
Operation temperature	T_a	-40	85	°C	NCAB0104-DQBDR
Junction temperature	T_J	-	150	°C	
Storage temperature	T_{stg}	-65	150	°C	

[1] Stresses beyond those listed under Absolute Maximum Ratings may cause permanent damage to the device. Exposure to Absolute Maximum Rating condition for extended periods may affect device reliability.

3. ESD Ratings

<i>Parameters</i>	<i>Ratings</i>	<i>Value</i>	<i>Unit</i>
Electrostatic discharge $V_{ESD-HBM1}$ $V_{ESD-HBM2}$	Human body model (JESD22/A114) - 100pF, 1.5k Ω <ul style="list-style-type: none">● B ports (Bn), to GND● Others	± 15.0 ± 8.0	kV kV
Electrostatic discharge $V_{ESD-CDM1}$	Charged device model (JESD22/C101)	± 2.0	kV
Electrostatic discharge $V_{ESD-system}$	System level ESD (Contact discharge) - 330 Ω /150pF unpowered according to IEC 61000-4-2 <ul style="list-style-type: none">● B ports (Bn)	± 15.0	kV

4. Recommended Operating Conditions

Symbol	Parameters	Conditions	Min	Max	Unit
V _{CCA}	Supply voltage		1.1	3.6	V
V _{CCB}			1.65	5.5	V
V _{IH(A_n)}	High-level input voltage	V _{CCA} = 1.1 V ~ 3.6 V V _{CCB} = 1.65 V ~ 5.5 V	0.7 * V _{CCA}	V _{CCA}	V
V _{IH(B_n)}		V _{CCA} = 1.1 V ~ 3.6 V V _{CCB} = 1.65 V ~ 5.5 V	0.7 * V _{CCB}	V _{CCB}	V
V _{IH(OE)}		V _{CCA} = 1.1 V ~ 3.6 V V _{CCB} = 1.65 V ~ 5.5 V	0.7 * V _{CCA}	5.5	V
V _{IL(A_n)}	Low-level input voltage	V _{CCA} = 1.1 V ~ 3.6 V V _{CCB} = 1.65 V ~ 5.5 V	0	0.3 * V _{CCA}	V
V _{IL(B_n)}		V _{CCA} = 1.1 V ~ 3.6 V V _{CCB} = 1.65 V ~ 5.5 V	0	0.3 * V _{CCB}	V
V _{IL(OE)}		V _{CCA} = 1.1 V ~ 3.6 V V _{CCB} = 1.65 V ~ 5.5 V	0	0.3 * V _{CCA}	V
Δt/Δv(A _n)	Input transition rise or fall rate	A port V _{CCA} = 1.1 V ~ 3.6 V V _{CCB} = 1.65 V ~ 5.5 V	-	40	ns/V
Δt/Δv(B _n)		B port V _{CCA} = 1.1 V ~ 3.6 V V _{CCB} = 1.65 V ~ 5.5 V	-	40	ns/V
T _a	Operating free-air temperature		-40	85 ^[1]	°C

[1] For NCAB0104-DQBDR.

5. Thermal Characteristics

Parameters	Symbol	UQFN12	Unit
Junction-to-air thermal resistance	θ _{JA}	119.8	°C/W
Junction-to-case (top) thermal resistance	θ _{JC(top)}	42.6	°C/W
Junction-to-board thermal resistance	θ _{JB}	52.5	°C/W

6. Specifications

6.1. Electrical Characteristics

V_{CCA} must be no higher than V_{CCB} . Unless otherwise noted, typical values are at $T_a = 25^\circ\text{C}$.

$T_a = -40^\circ\text{C}$ to 85°C for NCAB0104-DQBDR.

Symbol	Parameters	Conditions	Min	Typ	Max	Unit
Supply current: pin V_{CCA} and V_{CCB}						
I_{CCA}	V_{CCA} supply current	$V_{CCA} = 1.1\text{ V} \sim 3.6\text{ V}$, $V_{CCB} = 1.65\text{ V} \sim 5.5\text{ V}$, A and B ports all open			20	μA
		$V_{CCA} = 3.6\text{ V}$, $V_{CCB} = 0\text{ V}$, A and B ports all open	0		15	μA
		$V_{CCA} = 0\text{ V}$, $V_{CCB} = 5.5\text{ V}$, A and B ports all open	-15		0	μA
I_{CCB}	V_{CCB} supply current	$V_{CCA} = 1.1\text{ V} \sim 3.6\text{ V}$, $V_{CCB} = 1.65\text{ V} \sim 5.5\text{ V}$, A and B ports all open			20	μA
		$V_{CCA} = 3.6\text{ V}$, $V_{CCB} = 0\text{ V}$, A and B ports all open	-15		0	μA
		$V_{CCA} = 0\text{ V}$, $V_{CCB} = 5.5\text{ V}$, A and B ports all open	0		15	μA
$I_{CCA} + I_{CCB}$	Combined supply current	$V_{CCA} = 1.1\text{ V} \sim 3.6\text{ V}$, $V_{CCB} = 1.65\text{ V} \sim 5.5\text{ V}$, A and B ports all open			40	μA
I_{CCZA}	High-impedance-state, V_{CCA} supply current	$V_{CCA} = 1.1\text{ V} \sim 3.6\text{ V}$, $V_{CCB} = 1.65\text{ V} \sim 5.5\text{ V}$ OE = GND			15	μA
I_{CCZB}	High-impedance-state, V_{CCB} supply current	$V_{CCA} = 1.1\text{ V} \sim 3.6\text{ V}$, $V_{CCB} = 1.65\text{ V} \sim 5.5\text{ V}$ OE = GND			15	μA
A or B ports: pin A1, A2, A3, A4, B1, B2, B3, B4						
V_{OHA}	Port A output high voltage	$V_{CCA} = 1.1\text{ V} \sim 3.6\text{ V}$, $V_{CCB} = 1.65\text{ V} \sim 5.5\text{ V}$, $I_{OH} = -20\ \mu\text{A}$	$V_{CCA} - 0.4$			V
V_{OHB}	Port B output high voltage	$V_{CCA} = 1.1\text{ V} \sim 3.6\text{ V}$, $V_{CCB} = 1.65\text{ V} \sim 5.5\text{ V}$, $I_{OH} = -20\ \mu\text{A}$	$V_{CCB} - 0.4$			V
V_{OLA}	Port A output low voltage	$V_{CCA} = 1.1\text{ V} \sim 3.6\text{ V}$, $V_{CCB} = 1.65\text{ V} \sim 5.5\text{ V}$,			0.4	V

Symbol	Parameters	Conditions	Min	Typ	Max	Unit
		$I_{OL} = 20 \mu A$				
V_{OLB}	Port B output low voltage	$V_{CCA} = 1.1 V \sim 3.6 V$, $V_{CCB} = 1.65 V \sim 5.5 V$, $I_{OL} = 20 \mu A$			0.4	V
I_{OZ}	High-impedance-state output current	$V_{CCA} = 1.1 V \sim 3.6 V$, $V_{CCB} = 1.65 V \sim 5.5 V$, OE = GND	-2		2	μA
$I_{off(An)}$	Port A off-state current	$V_{CCA} = 0 V$, $V_{CCB} = 0 V \sim 5.5 V$, OE = GND	-2		2	μA
$I_{off(Bn)}$	Port B off-state current	$V_{CCA} = 0 V \sim 3.6 V$, $V_{CCB} = 0 V$, OE = GND	-2		2	μA
$C_{IO(An)}$	Input-output capacitance of port A				6	pF
$C_{IO(Bn)}$	Input-output capacitance of port B				14	pF
Output enable: pin OE						
$I_{I(OE)}$	Input leakage current of OE ^[1]	$V_{CCA} = 1.1 V \sim 3.6 V$, $V_{CCB} = 1.65 V \sim 5.5 V$, OE = $V_{CCA} / 0 V$	-10		10	μA
$C_{I(OE)}$	Input capacitance of OE				4	pF

[1] The OE internally integrates a pull-down resistor, ensuring that the chip is in a disabled state by default after power-up.

6.2. Timing Requirements

V_{CCA} must be no higher than V_{CCB} . Push-pull input. Unless otherwise noted, typical values are at $T_a = 25^\circ\text{C}$.

$T_a = -40^\circ\text{C}$ to 85°C for NCAB0104-DQBDR.

Not tested in production; guaranteed by design.

Symbol	Parameters	V_{CCA}	V_{CCB}	Min	Max	Unit
$V_{CCA} = 1.2\text{ V}$						
DR	Data rate	$V_{CCA} = 1.2\text{ V}$	$V_{CCB} = 1.8\text{ V} \pm 0.15\text{ V}$		20	Mbps
			$V_{CCB} = 2.5\text{ V} \pm 0.2\text{ V}$		20	Mbps
			$V_{CCB} = 3.3\text{ V} \pm 0.3\text{ V}$		20	Mbps
			$V_{CCB} = 5\text{ V} \pm 0.5\text{ V}$		20	Mbps
t_w	Pulse duration (data input)	$V_{CCA} = 1.2\text{ V}$	$V_{CCB} = 1.8\text{ V} \pm 0.15\text{ V}$	50		ns
			$V_{CCB} = 2.5\text{ V} \pm 0.2\text{ V}$	50		ns
			$V_{CCB} = 3.3\text{ V} \pm 0.3\text{ V}$	50		ns
			$V_{CCB} = 5\text{ V} \pm 0.5\text{ V}$	50		ns
$V_{CCA} = 1.5\text{ V} \pm 0.1\text{ V}$						
DR	Data rate	$V_{CCA} = 1.5\text{ V} \pm 0.1\text{ V}$	$V_{CCB} = 1.8\text{ V} \pm 0.15\text{ V}$		40	Mbps
			$V_{CCB} = 2.5\text{ V} \pm 0.2\text{ V}$		40	Mbps
			$V_{CCB} = 3.3\text{ V} \pm 0.3\text{ V}$		40	Mbps
			$V_{CCB} = 5\text{ V} \pm 0.5\text{ V}$		40	Mbps
t_w	Pulse duration (data input)	$V_{CCA} = 1.5\text{ V} \pm 0.1\text{ V}$	$V_{CCB} = 1.8\text{ V} \pm 0.15\text{ V}$	25		ns
			$V_{CCB} = 2.5\text{ V} \pm 0.2\text{ V}$	25		ns
			$V_{CCB} = 3.3\text{ V} \pm 0.3\text{ V}$	25		ns
			$V_{CCB} = 5\text{ V} \pm 0.5\text{ V}$	25		ns
$V_{CCA} = 1.8\text{ V} \pm 0.15\text{ V}$						
DR	Data rate	$V_{CCA} = 1.8\text{ V} \pm 0.15\text{ V}$	$V_{CCB} = 1.8\text{ V} \pm 0.15\text{ V}$		60	Mbps
			$V_{CCB} = 2.5\text{ V} \pm 0.2\text{ V}$		60	Mbps
			$V_{CCB} = 3.3\text{ V} \pm 0.3\text{ V}$		60	Mbps
			$V_{CCB} = 5\text{ V} \pm 0.5\text{ V}$		60	Mbps
t_w	Pulse duration (data input)	$V_{CCA} = 1.8\text{ V} \pm 0.15\text{ V}$	$V_{CCB} = 1.8\text{ V} \pm 0.15\text{ V}$	17		ns
			$V_{CCB} = 2.5\text{ V} \pm 0.2\text{ V}$	17		ns
			$V_{CCB} = 3.3\text{ V} \pm 0.3\text{ V}$	17		ns

Symbol	Parameters	V _{CCA}	V _{CCB}	Min	Max	Unit
			V _{CCB} = 5 V ± 0.5 V	17		ns

Symbol	Parameters	V _{CCA}	V _{CCB}	Min	Max	Unit
V_{CCA} = 2.5 V ± 0.2 V						
DR	Data rate	V _{CCA} = 2.5 V ± 0.2 V	V _{CCB} = 2.5 V ± 0.2 V		100	Mbps
			V _{CCB} = 3.3 V ± 0.3 V		100	Mbps
			V _{CCB} = 5 V ± 0.5 V		100	Mbps
t _w	Pulse duration (data input)	V _{CCA} = 2.5 V ± 0.2 V	V _{CCB} = 2.5 V ± 0.2 V	10		ns
			V _{CCB} = 3.3 V ± 0.3 V	10		ns
			V _{CCB} = 5 V ± 0.5 V	10		ns
V_{CCA} = 3.3 V ± 0.3 V						
DR	Data rate	V _{CCA} = 3.3 V ± 0.3 V	V _{CCB} = 3.3 V ± 0.3 V		100	Mbps
			V _{CCB} = 5 V ± 0.5 V		100	Mbps
t _w	Pulse duration (data input)	V _{CCA} = 3.3 V ± 0.3 V	V _{CCB} = 3.3 V ± 0.3 V	10		ns
			V _{CCB} = 5 V ± 0.5 V	10		ns

6.3. Switching Characteristics

V_{CCA} must be no higher than V_{CCB}. Push-pull input. Unless otherwise noted, typical values are at T_a = 25°C.

T_a = -40 °C to 85 °C for NCAB0104-DQBDR.

Not tested in production; guaranteed by design.

Symbol	Parameters	V _{CCA}	V _{CCB}	Min	Typ	Max	Unit
V_{CCA} = 1.2 V (T_a = 25°C)							
t _{PHL(A-B)}	Propagation delay time (high to low), from A (input) to B (output)	V _{CCA} = 1.2 V	V _{CCB} = 1.8 V ± 0.15 V		11.6	15	ns
			V _{CCB} = 2.5 V ± 0.2 V		9.4	14	ns
			V _{CCB} = 3.3 V ± 0.3 V		8	12	ns
			V _{CCB} = 5 V ± 0.5 V		8	12	ns
t _{PLH(A-B)}	Propagation delay time (low to high), from A (input) to B (output)		V _{CCB} = 1.8 V ± 0.15 V		11.3	15	ns
			V _{CCB} = 2.5 V ± 0.2 V		8.6	14	ns
			V _{CCB} = 3.3 V ± 0.3 V		8.4	12	ns
			V _{CCB} = 5 V ± 0.5 V		8.4	12	ns
t _{PHL(B-A)}	Propagation delay time (high to low), from B (input) to A (output)	V _{CCA} = 1.2 V	V _{CCB} = 1.8 V ± 0.15 V		12.8	16	ns

Symbol	Parameters	V _{CCA}	V _{CCB}	Min	Typ	Max	Unit
			V _{CCB} = 2.5 V ± 0.2 V		11.8	16	ns
			V _{CCB} = 3.3 V ± 0.3 V		11.4	15	ns
			V _{CCB} = 5 V ± 0.5 V		10.7	14	ns
t _{PLH(B-A)}	Propagation delay time (low to high), from B (input) to A (output)	V _{CCA} = 1.2 V	V _{CCB} = 1.8 V ± 0.15 V		9.7	14	ns
			V _{CCB} = 2.5 V ± 0.2 V		8.4	14	ns
			V _{CCB} = 3.3 V ± 0.3 V		7.8	12	ns
			V _{CCB} = 5 V ± 0.5 V		8	12	ns
t _{r(A_n)}	Rise time of port A (output)	V _{CCA} = 1.2 V	V _{CCB} = 1.8 V ± 0.15 V		8.8	12	ns
			V _{CCB} = 2.5 V ± 0.2 V		8.4	12	ns
			V _{CCB} = 3.3 V ± 0.3 V		8.7	12	ns
			V _{CCB} = 5 V ± 0.5 V		7.5	12	ns
t _{f(A_n)}	Fall time of port A (output)	V _{CCA} = 1.2 V	V _{CCB} = 1.8 V ± 0.15 V		12.5	16	ns
			V _{CCB} = 2.5 V ± 0.2 V		13.4	16	ns
			V _{CCB} = 3.3 V ± 0.3 V		14.1	16	ns
			V _{CCB} = 5 V ± 0.5 V		11.2	16	ns
t _{r(B_n)}	Rise time of port B (output)	V _{CCA} = 1.2 V	V _{CCB} = 1.8 V ± 0.15 V		6.1	10	ns
			V _{CCB} = 2.5 V ± 0.2 V		5.4	10	ns
			V _{CCB} = 3.3 V ± 0.3 V		5.0	10	ns
			V _{CCB} = 5 V ± 0.5 V		4.9	10	ns
t _{f(B_n)}	Fall time of port B (output)	V _{CCA} = 1.2 V	V _{CCB} = 1.8 V ± 0.15 V		6.5	12	ns
			V _{CCB} = 2.5 V ± 0.2 V		6.0	12	ns
			V _{CCB} = 3.3 V ± 0.3 V		5.9	12	ns
			V _{CCB} = 5 V ± 0.5 V		5.4	12	ns
t _{sk}	Channel-to channel skew	V _{CCA} = 1.2 V	V _{CCB} = 1.8 V ± 0.15 V		0.4		ns
			V _{CCB} = 2.5 V ± 0.2 V		0.5		ns
			V _{CCB} = 3.3 V ± 0.3 V		0.5		ns
			V _{CCB} = 5 V ± 0.5 V		1.4		ns
t _{en(OE-A)}	Enable time, from OE (input) to A (output), t _{PZL}	V _{CCA} = 1.2 V	V _{CCB} = 1.8 V ± 0.15 V		160		ns

Symbol	Parameters	V _{CCA}	V _{CCB}	Min	Typ	Max	Unit
	Enable time, from OE (input) to A (output), t _{PZH}		V _{CCB} = 2.5 V ± 0.2 V		160		ns
			V _{CCB} = 3.3 V ± 0.3 V		40		ns
			V _{CCB} = 5 V ± 0.5 V		20		ns
			V _{CCB} = 1.8 V ± 0.15 V		200		ns
			V _{CCB} = 2.5 V ± 0.2 V		200		ns
			V _{CCB} = 3.3 V ± 0.3 V		200		ns
			V _{CCB} = 5 V ± 0.5 V		200		ns
t _{dis(OE-A)}	Disable time, from OE (input) to A (output), t _{PLZ}	V _{CCA} = 1.2 V	V _{CCB} = 1.8 V ± 0.15 V		200		ns
			V _{CCB} = 2.5 V ± 0.2 V		200		ns
			V _{CCB} = 3.3 V ± 0.3 V		200		ns
			V _{CCB} = 5 V ± 0.5 V		200		ns
	Disable time, from OE (input) to A (output), t _{PHZ}		V _{CCB} = 1.8 V ± 0.15 V		300		ns
			V _{CCB} = 2.5 V ± 0.2 V		300		ns
			V _{CCB} = 3.3 V ± 0.3 V		300		ns
			V _{CCB} = 5 V ± 0.5 V		300		ns
t _{en(OE-B)}	Enable time, from OE (input) to B (output), t _{PZL}	V _{CCA} = 1.2 V	V _{CCB} = 1.8 V ± 0.15 V		200		ns
			V _{CCB} = 2.5 V ± 0.2 V		200		ns
			V _{CCB} = 3.3 V ± 0.3 V		200		ns
			V _{CCB} = 5 V ± 0.5 V		200		ns
	Enable time, from OE (input) to B (output), t _{PZH}		V _{CCB} = 1.8 V ± 0.15 V		200		ns
			V _{CCB} = 2.5 V ± 0.2 V		200		ns
			V _{CCB} = 3.3 V ± 0.3 V		20		ns
			V _{CCB} = 5 V ± 0.5 V		20		ns
t _{dis(OE-B)}	Disable time, from OE (input) to B (output), t _{PLZ}	V _{CCA} = 1.2 V	V _{CCB} = 1.8 V ± 0.15 V		200		ns
			V _{CCB} = 2.5 V ± 0.2 V		200		ns
			V _{CCB} = 3.3 V ± 0.3 V		200		ns
			V _{CCB} = 5 V ± 0.5 V		200		ns
	Disable time, from OE (input) to B (output), t _{PHZ}		V _{CCB} = 1.8 V ± 0.15 V		350		ns

<i>Symbol</i>	<i>Parameters</i>	<i>V_{CCA}</i>	<i>V_{CCB}</i>	<i>Min</i>	<i>Typ</i>	<i>Max</i>	<i>Unit</i>
			$V_{CCB} = 2.5\text{ V} \pm 0.2\text{ V}$		350		ns
			$V_{CCB} = 3.3\text{ V} \pm 0.3\text{ V}$		350		ns
			$V_{CCB} = 5\text{ V} \pm 0.5\text{ V}$		350		ns

Symbol	Parameters	V _{CCA}	V _{CCB}	Min	Typ	Max	Unit
V_{CCA} = 1.5 V ± 0.1 V							
t _{PHL(A-B)}	Propagation delay time (high to low), from A (input) to B (output)	V _{CCA} = 1.5 V ± 0.1 V	V _{CCB} = 1.8 V ± 0.15 V	1.4	9.6	12.9	ns
			V _{CCB} = 2.5 V ± 0.2 V	1.2	6.9	10.1	ns
			V _{CCB} = 3.3 V ± 0.3 V	1.1	5.4	10	ns
			V _{CCB} = 5 V ± 0.5 V	0.8	5.3	9.9	ns
t _{PLH(A-B)}	Propagation delay time (low to high), from A (input) to B (output)	V _{CCA} = 1.5 V ± 0.1 V	V _{CCB} = 1.8 V ± 0.15 V	1.4	9.1	12.9	ns
			V _{CCB} = 2.5 V ± 0.2 V	1.2	6.1	10.1	ns
			V _{CCB} = 3.3 V ± 0.3 V	1.1	5.9	10	ns
			V _{CCB} = 5 V ± 0.5 V	0.8	5.6	9.9	ns
t _{PHL(B-A)}	Propagation delay time (high to low), from B (input) to A (output)	V _{CCA} = 1.5 V ± 0.1 V	V _{CCB} = 1.8 V ± 0.15 V	0.9	8.7	14.2	ns
			V _{CCB} = 2.5 V ± 0.2 V	0.7	7.4	12	ns
			V _{CCB} = 3.3 V ± 0.3 V	0.4	7.0	11.7	ns
			V _{CCB} = 5 V ± 0.5 V	0.3	6.5	13.7	ns
t _{PLH(B-A)}	Propagation delay time (low to high), from B (input) to A (output)	V _{CCA} = 1.5 V ± 0.1 V	V _{CCB} = 1.8 V ± 0.15 V	0.9	8.4	14.2	ns
			V _{CCB} = 2.5 V ± 0.2 V	0.7	6.7	12	ns
			V _{CCB} = 3.3 V ± 0.3 V	0.4	6.1	11.7	ns
			V _{CCB} = 5 V ± 0.5 V	0.3	5.9	13.7	ns
t _{r(A)}	Rise time of port A (output)	V _{CCA} = 1.5 V ± 0.1 V	V _{CCB} = 1.8 V ± 0.15 V	1.4	6.0	10	ns
			V _{CCB} = 2.5 V ± 0.2 V	1.4	6.1	10	ns
			V _{CCB} = 3.3 V ± 0.3 V	1.4	6.2	10	ns
			V _{CCB} = 5 V ± 0.5 V	1.4	6.2	10	ns
t _{r(A)}	Fall time of port A (output)	V _{CCA} = 1.5 V ± 0.1 V	V _{CCB} = 1.8 V ± 0.15 V	1.4	7.6	10	ns
			V _{CCB} = 2.5 V ± 0.2 V	1.4	7.9	10	ns
			V _{CCB} = 3.3 V ± 0.3 V	1.4	7.9	10	ns
			V _{CCB} = 5 V ± 0.5 V	1.4	7.7	10	ns
t _{r(B)}	Rise time of port B (output)	V _{CCA} = 1.5 V ± 0.1 V	V _{CCB} = 1.8 V ± 0.15 V	0.9	6.1	10	ns
			V _{CCB} = 2.5 V ± 0.2 V	0.6	5.4	10	ns
			V _{CCB} = 3.3 V ± 0.3 V	0.5	5.1	10	ns

Symbol	Parameters	V _{CCA}	V _{CCB}	Min	Typ	Max	Unit
t _{r(Bn)}	Fall time of port B (output)		V _{CCB} = 5 V ± 0.5 V	0.4	4.8	10	ns
			V _{CCB} = 1.8 V ± 0.15 V	0.9	7.3	10	ns
			V _{CCB} = 2.5 V ± 0.2 V	0.6	6.1	10	ns
			V _{CCB} = 3.3 V ± 0.3 V	0.5	5.9	10	ns
			V _{CCB} = 5 V ± 0.5 V	0.4	5.6	10	ns
t _{sk}	Channel-to channel skew	V _{CCA} = 1.5 V ± 0.1 V	V _{CCB} = 1.8 V ± 0.15 V			0.5	ns
			V _{CCB} = 2.5 V ± 0.2 V			0.5	ns
			V _{CCB} = 3.3 V ± 0.3 V			0.5	ns
			V _{CCB} = 5 V ± 0.5 V			0.5	ns
t _{en(OE-A)}	Enable time, from OE (input) to A (output), t _{PZL}	V _{CCA} = 1.5 V ± 0.1 V	V _{CCB} = 1.8 V ± 0.15 V		150		ns
			V _{CCB} = 2.5 V ± 0.2 V		150		ns
			V _{CCB} = 3.3 V ± 0.3 V		150		ns
			V _{CCB} = 5 V ± 0.5 V		150		ns
t _{en(OE-A)}	Enable time, from OE (input) to A (output), t _{PZH}	V _{CCA} = 1.5 V ± 0.1 V	V _{CCB} = 1.8 V ± 0.15 V		180		ns
			V _{CCB} = 2.5 V ± 0.2 V		180		ns
			V _{CCB} = 3.3 V ± 0.3 V		180		ns
			V _{CCB} = 5 V ± 0.5 V		180		ns
t _{dis(OE-A)}	Disable time, from OE (input) to A (output), t _{PLZ}	V _{CCA} = 1.5 V ± 0.1 V	V _{CCB} = 1.8 V ± 0.15 V		200		ns
			V _{CCB} = 2.5 V ± 0.2 V		200		ns
			V _{CCB} = 3.3 V ± 0.3 V		200		ns
			V _{CCB} = 5 V ± 0.5 V		200		ns
t _{dis(OE-A)}	Disable time, from OE (input) to A (output), t _{PHZ}	V _{CCA} = 1.5 V ± 0.1 V	V _{CCB} = 1.8 V ± 0.15 V		260		ns
			V _{CCB} = 2.5 V ± 0.2 V		260		ns
			V _{CCB} = 3.3 V ± 0.3 V		260		ns
			V _{CCB} = 5 V ± 0.5 V		260		ns
t _{en(OE-B)}	Enable time, from OE (input) to B (output), t _{PZL}	V _{CCA} = 1.5 V ± 0.1 V	V _{CCB} = 1.8 V ± 0.15 V		170		ns
			V _{CCB} = 2.5 V ± 0.2 V		170		ns
			V _{CCB} = 3.3 V ± 0.3 V		170		ns

Symbol	Parameters	V _{CCA}	V _{CCB}	Min	Typ	Max	Unit
t _{en(OE-B)}	Enable time, from OE (input) to B (output), t _{PZH}		V _{CCB} = 5 V ± 0.5 V		170		ns
			V _{CCB} = 1.8 V ± 0.15 V		300		ns
			V _{CCB} = 2.5 V ± 0.2 V		190		ns
			V _{CCB} = 3.3 V ± 0.3 V		190		ns
			V _{CCB} = 5 V ± 0.5 V		190		ns
t _{dis(OE-B)}	Disable time, from OE (input) to B (output), t _{PLZ}	V _{CCA} = 1.5 V ± 0.1 V	V _{CCB} = 1.8 V ± 0.15 V		210		ns
			V _{CCB} = 2.5 V ± 0.2 V		210		ns
			V _{CCB} = 3.3 V ± 0.3 V		210		ns
			V _{CCB} = 5 V ± 0.5 V		210		ns
t _{dis(OE-B)}	Disable time, from OE (input) to B (output), t _{PHZ}	V _{CCA} = 1.5 V ± 0.1 V	V _{CCB} = 1.8 V ± 0.15 V		430		ns
			V _{CCB} = 2.5 V ± 0.2 V		330		ns
			V _{CCB} = 3.3 V ± 0.3 V		330		ns
			V _{CCB} = 5 V ± 0.5 V		330		ns

Symbol	Parameters	V _{CCA}	V _{CCB}	Min	Typ	Max	Unit
V_{CCA} = 1.8 V ± 0.15 V							
t _{PHL(A-B)}	Propagation delay time (high to low), from A (input) to B (output)	V _{CCA} = 1.8 V ± 0.15 V	V _{CCB} = 1.8 V ± 0.15 V	1.6	8.8	11	ns
			V _{CCB} = 2.5 V ± 0.2 V	1.4	6.2	7.7	ns
			V _{CCB} = 3.3 V ± 0.3 V	1.3	4.5	6.8	ns
			V _{CCB} = 5 V ± 0.5 V	1.2	4.3	6.5	ns
t _{PLH(A-B)}	Propagation delay time (low to high), from A (input) to B (output)	V _{CCA} = 1.8 V ± 0.15 V	V _{CCB} = 1.8 V ± 0.15 V	1.6	7.6	11	ns
			V _{CCB} = 2.5 V ± 0.2 V	1.4	5.1	7.7	ns
			V _{CCB} = 3.3 V ± 0.3 V	1.3	4.6	6.8	ns
			V _{CCB} = 5 V ± 0.5 V	1.2	4.5	6.5	ns
t _{PHL(B-A)}	Propagation delay time (high to low), from B (input) to A (output)	V _{CCA} = 1.8 V ± 0.15 V	V _{CCB} = 1.8 V ± 0.15 V	1.5	7.8	12	ns
			V _{CCB} = 2.5 V ± 0.2 V	1.3	6.4	8.4	ns
			V _{CCB} = 3.3 V ± 0.3 V	1	5.8	7.6	ns
			V _{CCB} = 5 V ± 0.5 V	0.9	5.5	7.1	ns

Symbol	Parameters	V _{CCA}	V _{CCB}	Min	Typ	Max	Unit
t _{PLH(B-A)}	Propagation delay time (low to high), from B (input) to A (output)		V _{CCB} = 1.8 V ± 0.15 V	1.5	7.7	12	ns
			V _{CCB} = 2.5 V ± 0.2 V	1.3	5.9	8.4	ns
			V _{CCB} = 3.3 V ± 0.3 V	1	5.4	7.6	ns
			V _{CCB} = 5 V ± 0.5 V	0.9	5.2	7.1	ns
t _{r(A_n)}	Rise time of port A (output)	V _{CCA} = 1.8 V ± 0.15 V	V _{CCB} = 1.8 V ± 0.15 V	1	3.8	10	ns
			V _{CCB} = 2.5 V ± 0.2 V	1.1	3.9	10	ns
			V _{CCB} = 3.3 V ± 0.3 V	1.1	4.1	10	ns
			V _{CCB} = 5 V ± 0.5 V	1.1	4.4	10	ns
t _{f(A_n)}	Fall time of port A (output)	V _{CCA} = 1.8 V ± 0.15 V	V _{CCB} = 1.8 V ± 0.15 V	1	7.2	10	ns
			V _{CCB} = 2.5 V ± 0.2 V	1.1	7.2	10	ns
			V _{CCB} = 3.3 V ± 0.3 V	1.1	7.2	10	ns
			V _{CCB} = 5 V ± 0.5 V	1.1	7.2	10	ns
t _{r(B_n)}	Rise time of port B (output)	V _{CCA} = 1.8 V ± 0.15 V	V _{CCB} = 1.8 V ± 0.15 V	0.9	6.2	10	ns
			V _{CCB} = 2.5 V ± 0.2 V	0.6	5.4	10	ns
			V _{CCB} = 3.3 V ± 0.3 V	0.5	5.0	10	ns
			V _{CCB} = 5 V ± 0.5 V	0.4	4.9	10	ns
t _{f(B_n)}	Fall time of port B (output)	V _{CCA} = 1.8 V ± 0.15 V	V _{CCB} = 1.8 V ± 0.15 V	0.9	7.1	10	ns
			V _{CCB} = 2.5 V ± 0.2 V	0.6	6.0	10	ns
			V _{CCB} = 3.3 V ± 0.3 V	0.5	5.9	10	ns
			V _{CCB} = 5 V ± 0.5 V	0.4	5.6	10	ns
t _{sk}	Channel-to channel skew	V _{CCA} = 1.8 V ± 0.15 V	V _{CCB} = 1.8 V ± 0.15 V			0.5	ns
			V _{CCB} = 2.5 V ± 0.2 V			0.5	ns
			V _{CCB} = 3.3 V ± 0.3 V			0.5	ns
			V _{CCB} = 5 V ± 0.5 V			0.5	ns
t _{en(OE-A)}	Enable time, from OE (input) to A (output), t _{PZL}	V _{CCA} = 1.8 V ± 0.15 V	V _{CCB} = 1.8 V ± 0.15 V		150		ns
			V _{CCB} = 2.5 V ± 0.2 V		150		ns
			V _{CCB} = 3.3 V ± 0.3 V		150		ns
			V _{CCB} = 5 V ± 0.5 V		150		ns

Symbol	Parameters	V _{CCA}	V _{CCB}	Min	Typ	Max	Unit
t _{en(OE-A)}	Enable time, from OE (input) to A (output), t _{PZH}		V _{CCB} = 1.8 V ± 0.15 V		170		ns
			V _{CCB} = 2.5 V ± 0.2 V		170		ns
			V _{CCB} = 3.3 V ± 0.3 V		170		ns
			V _{CCB} = 5 V ± 0.5 V		170		ns
t _{dis(OE-A)}	Disable time, from OE (input) to A (output), t _{PLZ}		V _{CCB} = 1.8 V ± 0.15 V		180		ns
			V _{CCB} = 2.5 V ± 0.2 V		180		ns
			V _{CCB} = 3.3 V ± 0.3 V		180		ns
			V _{CCB} = 5 V ± 0.5 V		180		ns
t _{dis(OE-A)}	Disable time, from OE (input) to A (output), t _{PHZ}	V _{CCA} = 1.8 V ± 0.15 V	V _{CCB} = 1.8 V ± 0.15 V		260		ns
			V _{CCB} = 2.5 V ± 0.2 V		260		ns
			V _{CCB} = 3.3 V ± 0.3 V		260		ns
			V _{CCB} = 5 V ± 0.5 V		260		ns
t _{en(OE-B)}	Enable time, from OE (input) to B (output), t _{PZL}		V _{CCB} = 1.8 V ± 0.15 V		170		ns
			V _{CCB} = 2.5 V ± 0.2 V		170		ns
			V _{CCB} = 3.3 V ± 0.3 V		170		ns
			V _{CCB} = 5 V ± 0.5 V		170		ns
t _{en(OE-B)}	Enable time, from OE (input) to B (output), t _{PZH}	V _{CCA} = 1.8 V ± 0.15 V	V _{CCB} = 1.8 V ± 0.15 V		200		ns
			V _{CCB} = 2.5 V ± 0.2 V		200		ns
			V _{CCB} = 3.3 V ± 0.3 V		200		ns
			V _{CCB} = 5 V ± 0.5 V		200		ns
t _{dis(OE-B)}	Disable time, from OE (input) to B (output), t _{PLZ}		V _{CCB} = 1.8 V ± 0.15 V		200		ns
			V _{CCB} = 2.5 V ± 0.2 V		200		ns
			V _{CCB} = 3.3 V ± 0.3 V		200		ns
			V _{CCB} = 5 V ± 0.5 V		200		ns
t _{dis(OE-B)}	Disable time, from OE (input) to B (output), t _{PHZ}	V _{CCA} = 1.8 V ± 0.15 V	V _{CCB} = 1.8 V ± 0.15 V		350		ns
			V _{CCB} = 2.5 V ± 0.2 V		330		ns
			V _{CCB} = 3.3 V ± 0.3 V		330		ns
			V _{CCB} = 5 V ± 0.5 V		320		ns

Symbol	Parameters	V_{CCA}	V_{CCB}	Min	Typ	Max	Unit
$V_{CCA} = 2.5\text{ V} \pm 0.2\text{ V}$							
$t_{PHL(A-B)}$	Propagation delay time (high to low), from A (input) to B (output)	$V_{CCA} = 2.5\text{ V} \pm 0.2\text{ V}$	$V_{CCB} = 2.5\text{ V} \pm 0.2\text{ V}$	1.1	5.4	6.3	ns
			$V_{CCB} = 3.3\text{ V} \pm 0.3\text{ V}$	1	5.0	6.2	ns
			$V_{CCB} = 5\text{ V} \pm 0.5\text{ V}$	0.9	3.4	4.7	ns
$t_{PLH(A-B)}$	Propagation delay time (low to high), from A (input) to B (output)		$V_{CCB} = 2.5\text{ V} \pm 0.2\text{ V}$	1.1	4.3	6.3	ns
			$V_{CCB} = 3.3\text{ V} \pm 0.3\text{ V}$	1	3.7	5.2	ns
			$V_{CCB} = 5\text{ V} \pm 0.5\text{ V}$	0.9	3.5	4.7	ns
$t_{PHL(B-A)}$	Propagation delay time (high to low), from B (input) to A (output)	$V_{CCB} = 2.5\text{ V} \pm 0.2\text{ V}$	1.2	5.5	6.6	ns	
		$V_{CCB} = 3.3\text{ V} \pm 0.3\text{ V}$	1.1	4.9	6.1	ns	
		$V_{CCB} = 5\text{ V} \pm 0.5\text{ V}$	0.9	4.6	6.4	ns	
$t_{PLH(B-A)}$	Propagation delay time (low to high), from B (input) to A (output)	$V_{CCB} = 2.5\text{ V} \pm 0.2\text{ V}$	1.2	4.2	6.6	ns	
		$V_{CCB} = 3.3\text{ V} \pm 0.3\text{ V}$	1.1	3.6	5.1	ns	
		$V_{CCB} = 5\text{ V} \pm 0.5\text{ V}$	0.9	3.2	4.4	ns	
$t_{r(A)}$	Rise time of port A (output)	$V_{CCB} = 2.5\text{ V} \pm 0.2\text{ V}$	0.8	3.0	10	ns	
		$V_{CCB} = 3.3\text{ V} \pm 0.3\text{ V}$	0.8	3.1	10	ns	
		$V_{CCB} = 5\text{ V} \pm 0.5\text{ V}$	0.8	3.2	10	ns	
$t_{f(A)}$	Fall time of port A (output)	$V_{CCB} = 2.5\text{ V} \pm 0.2\text{ V}$	0.8	5.3	10	ns	
		$V_{CCB} = 3.3\text{ V} \pm 0.3\text{ V}$	0.8	5.5	10	ns	
		$V_{CCB} = 5\text{ V} \pm 0.5\text{ V}$	0.8	5.5	10	ns	
$t_{r(B)}$	Rise time of port B (output)	$V_{CCB} = 2.5\text{ V} \pm 0.2\text{ V}$	0.7	5.4	10	ns	
		$V_{CCB} = 3.3\text{ V} \pm 0.3\text{ V}$	0.5	5.1	10	ns	
		$V_{CCB} = 5\text{ V} \pm 0.5\text{ V}$	0.4	5.0	10	ns	
$t_{f(B)}$	Fall time of port B (output)	$V_{CCB} = 2.5\text{ V} \pm 0.2\text{ V}$	0.7	6.0	10	ns	
		$V_{CCB} = 3.3\text{ V} \pm 0.3\text{ V}$	0.5	5.8	10	ns	
		$V_{CCB} = 5\text{ V} \pm 0.5\text{ V}$	0.4	5.6	10	ns	
t_{sk}	Channel-to channel skew	$V_{CCB} = 2.5\text{ V} \pm 0.2\text{ V}$				0.5	ns
		$V_{CCB} = 3.3\text{ V} \pm 0.3\text{ V}$				0.5	ns
		$V_{CCB} = 5\text{ V} \pm 0.5\text{ V}$				0.5	ns
$t_{en(OE-A)}$	Enable time, from OE (input) to A (output), t_{PZL}	$V_{CCB} = 2.5\text{ V} \pm 0.2\text{ V}$			140		ns
		$V_{CCB} = 3.3\text{ V} \pm 0.3\text{ V}$			140		ns
		$V_{CCB} = 5\text{ V} \pm 0.5\text{ V}$			140		ns

Symbol	Parameters	V _{CCA}	V _{CCB}	Min	Typ	Max	Unit
	Enable time, from OE (input) to A (output), t _{PZH}		V _{CCB} = 2.5 V ± 0.2 V		160		ns
			V _{CCB} = 3.3 V ± 0.3 V		160		ns
			V _{CCB} = 5 V ± 0.5 V		160		ns
t _{dis(OE-A)}	Disable time, from OE (input) to A (output), t _{PLZ}	V _{CCA} = 2.5 V ± 0.2 V	V _{CCB} = 2.5 V ± 0.2 V		180		ns
			V _{CCB} = 3.3 V ± 0.3 V		180		ns
			V _{CCB} = 5 V ± 0.5 V		180		ns
	Disable time, from OE (input) to A (output), t _{PHZ}		V _{CCB} = 2.5 V ± 0.2 V		250		ns
			V _{CCB} = 3.3 V ± 0.3 V		250		ns
			V _{CCB} = 5 V ± 0.5 V		250		ns
t _{en(OE-B)}	Enable time, from OE (input) to B (output), t _{PLZ}	V _{CCA} = 2.5 V ± 0.2 V	V _{CCB} = 2.5 V ± 0.2 V		170		ns
			V _{CCB} = 3.3 V ± 0.3 V		170		ns
			V _{CCB} = 5 V ± 0.5 V		170		ns
	Enable time, from OE (input) to B (output), t _{PZH}		V _{CCB} = 2.5 V ± 0.2 V		190		ns
			V _{CCB} = 3.3 V ± 0.3 V		190		ns
			V _{CCB} = 5 V ± 0.5 V		190		ns
t _{dis(OE-B)}	Disable time, from OE (input) to B (output), t _{PLZ}	V _{CCA} = 2.5 V ± 0.2 V	V _{CCB} = 2.5 V ± 0.2 V		210		ns
			V _{CCB} = 3.3 V ± 0.3 V		210		ns
			V _{CCB} = 5 V ± 0.5 V		210		ns
	Disable time, from OE (input) to B (output), t _{PHZ}		V _{CCB} = 2.5 V ± 0.2 V		330		ns
			V _{CCB} = 3.3 V ± 0.3 V		330		ns
			V _{CCB} = 5 V ± 0.5 V		330		ns

Symbol	Parameters	V _{CCA}	V _{CCB}	Min	Typ	Max	Unit
V_{CCA} = 3.3 V ± 0.3 V							
t _{PHL(A-B)}	Propagation delay time (high to low), from A (input) to B (output)	V _{CCA} = 3.3 V ± 0.3 V	V _{CCB} = 3.3 V ± 0.3 V	0.9	4.4	5.7	ns
			V _{CCB} = 5 V ± 0.5 V	0.8	3.0	4	ns
t _{PLH(A-B)}	Propagation delay time (low to high), from A (input) to B (output)		V _{CCB} = 3.3 V ± 0.3 V	0.9	3.4	4.7	ns
			V _{CCB} = 5 V ± 0.5 V	0.8	3.3	4	ns
t _{PHL(B-A)}	Propagation delay time (high to low), from B (input) to A (output)	V _{CCA} = 3.3 V ± 0.3 V	V _{CCB} = 3.3 V ± 0.3 V	1	4.3	5.9	ns
			V _{CCB} = 5 V ± 0.5 V	0.9	4.3	5.8	ns
t _{PLH(B-A)}			V _{CCB} = 3.3 V ± 0.3 V	1	3.4	4.9	ns

Symbol	Parameters	V _{CCA}	V _{CCB}	Min	Typ	Max	Unit
	Propagation delay time (low to high), from B (input) to A (output)		V _{CCB} = 5 V ± 0.5 V	0.9	2.9	3.8	ns
t _{r(A_n)}	Rise time of port A (output)	V _{CCA} = 3.3 V ± 0.3 V	V _{CCB} = 3.3 V ± 0.3 V	0.7	2.8	5	ns
			V _{CCB} = 5 V ± 0.5 V	0.7	2.9	5	ns
t _{f(A_n)}	Fall time of port A (output)	V _{CCA} = 3.3 V ± 0.3 V	V _{CCB} = 3.3 V ± 0.3 V	0.7	3.9	5	ns
			V _{CCB} = 5 V ± 0.5 V	0.7	4.0	5	ns
t _{r(B_n)}	Rise time of port B (output)	V _{CCA} = 3.3 V ± 0.3 V	V _{CCB} = 3.3 V ± 0.3 V	0.5	5.3	10	ns
			V _{CCB} = 5 V ± 0.5 V	0.4	5.1	10	ns
t _{f(B_n)}	Fall time of port B (output)	V _{CCA} = 3.3 V ± 0.3 V	V _{CCB} = 3.3 V ± 0.3 V	0.5	5.8	10	ns
			V _{CCB} = 5 V ± 0.5 V	0.4	5.6	10	ns
t _{sk}	Channel-to channel skew	V _{CCA} = 3.3 V ± 0.3 V	V _{CCB} = 3.3 V ± 0.3 V			0.5	ns
			V _{CCB} = 5 V ± 0.5 V			0.5	ns
t _{en(OE-A)}	Enable time, from OE (input) to A (output), t _{PZL}	V _{CCA} = 3.3 V ± 0.3 V	V _{CCB} = 3.3 V ± 0.3 V		140		ns
			V _{CCB} = 5 V ± 0.5 V		140		ns
t _{en(OE-A)}	Enable time, from OE (input) to A (output), t _{PHZ}	V _{CCA} = 3.3 V ± 0.3 V	V _{CCB} = 3.3 V ± 0.3 V		150		ns
			V _{CCB} = 5 V ± 0.5 V		150		ns
t _{dis(OE-A)}	Disable time, from OE (input) to A (output), t _{PLZ}	V _{CCA} = 3.3 V ± 0.3 V	V _{CCB} = 3.3 V ± 0.3 V		180		ns
			V _{CCB} = 5 V ± 0.5 V		180		ns
t _{dis(OE-A)}	Disable time, from OE (input) to A (output), t _{PHZ}	V _{CCA} = 3.3 V ± 0.3 V	V _{CCB} = 3.3 V ± 0.3 V		240		ns
			V _{CCB} = 5 V ± 0.5 V		240		ns
t _{en(OE-B)}	Enable time, from OE (input) to B (output), t _{PZL}	V _{CCA} = 3.3 V ± 0.3 V	V _{CCB} = 3.3 V ± 0.3 V		170		ns
			V _{CCB} = 5 V ± 0.5 V		170		ns
t _{en(OE-B)}	Enable time, from OE (input) to B (output), t _{PHZ}	V _{CCA} = 3.3 V ± 0.3 V	V _{CCB} = 3.3 V ± 0.3 V		180		ns
			V _{CCB} = 5 V ± 0.5 V		180		ns
t _{dis(OE-B)}	Disable time, from OE (input) to B (output), t _{PLZ}	V _{CCA} = 3.3 V ± 0.3 V	V _{CCB} = 3.3 V ± 0.3 V		210		ns
			V _{CCB} = 5 V ± 0.5 V		210		ns
t _{dis(OE-B)}	Disable time, from OE (input) to B (output), t _{PHZ}	V _{CCA} = 3.3 V ± 0.3 V	V _{CCB} = 3.3 V ± 0.3 V		320		ns
			V _{CCB} = 5 V ± 0.5 V		320		ns

6.4. Parameter Measurement Information

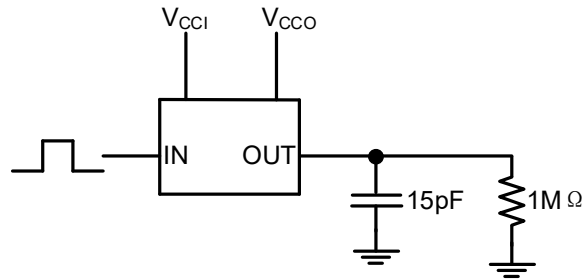


Figure 6. 1 Test circuit for data rate, pulse duration, propagation delay, output rise time, and fall time using push-pull driver

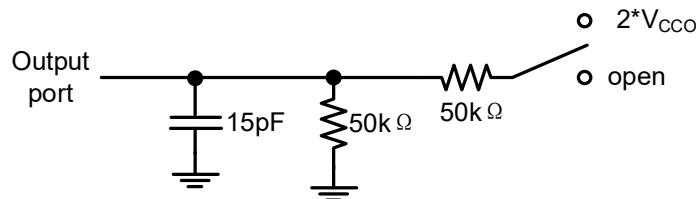


Figure 6. 2 Load circuit for enable time and disable time measurement

Notes:

1. S1 switches to $2 \times V_{CC0}$ when t_{PZL} and t_{PLZ} are measured.
2. S1 switches to Open when t_{PZH} and t_{PHZ} are measured.
3. t_{PLZ} and t_{PHZ} are the same as t_{dis} .
4. t_{PZL} and t_{PZH} are the same as t_{en} .
5. V_{CC1} is the V_{CCX} associated with the input port.
6. V_{CC0} is the V_{CCX} associated with the output port.

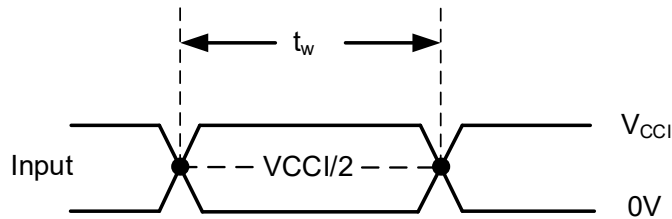


Figure 6. 3 Pulse duration

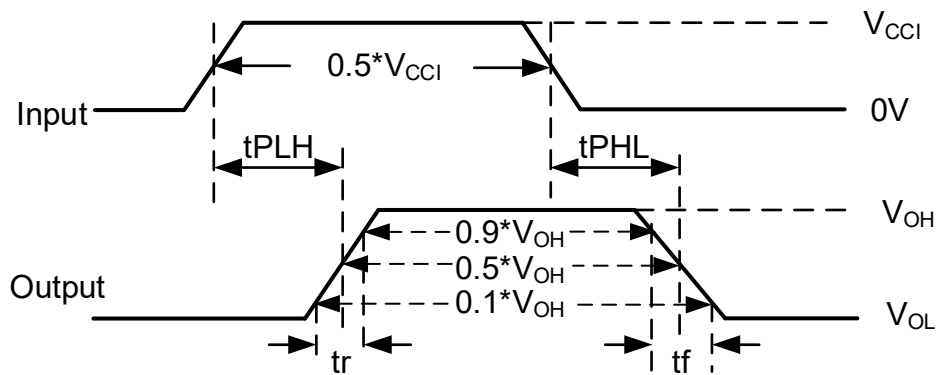


Figure 6. 4 Propagation delay, rise and fall time

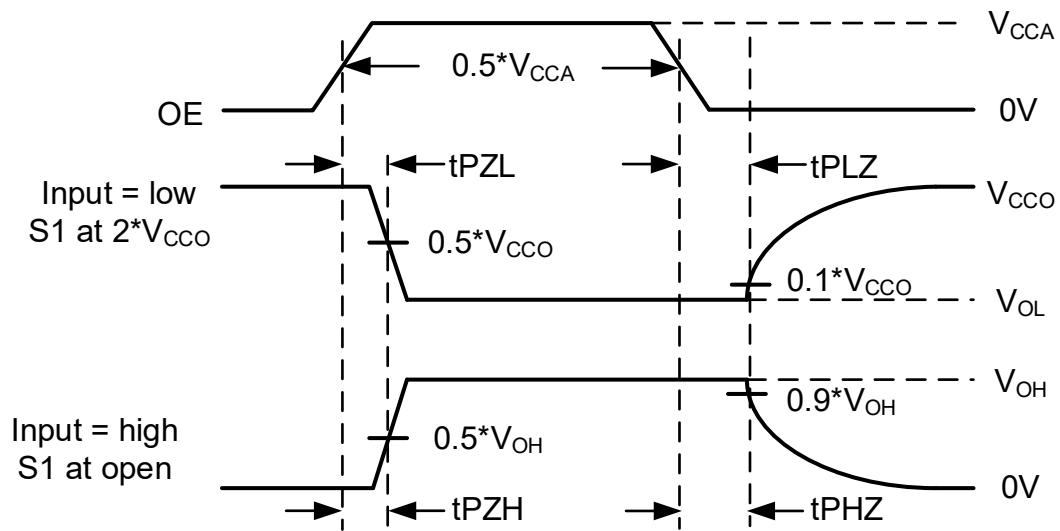


Figure 6. 5 Enable and disable time

7. Function Description

7.1. Overview

NCAB0104 device is a directionless voltage-level translator specifically designed for translating logic voltage levels. The A port can accept I/O voltages ranging from 1.1 V to 3.6 V, while the B port can accept I/O voltages from 1.65 V to 5.5 V. The device is a buffered architecture with edge rate accelerator (one shot) to improve the overall data rate. This device can only translate push-pull CMOS logic outputs. If for open-drain signal translation, please refer to NCAS0104 of NOVOSENSE.

7.2. Functional Block Diagram

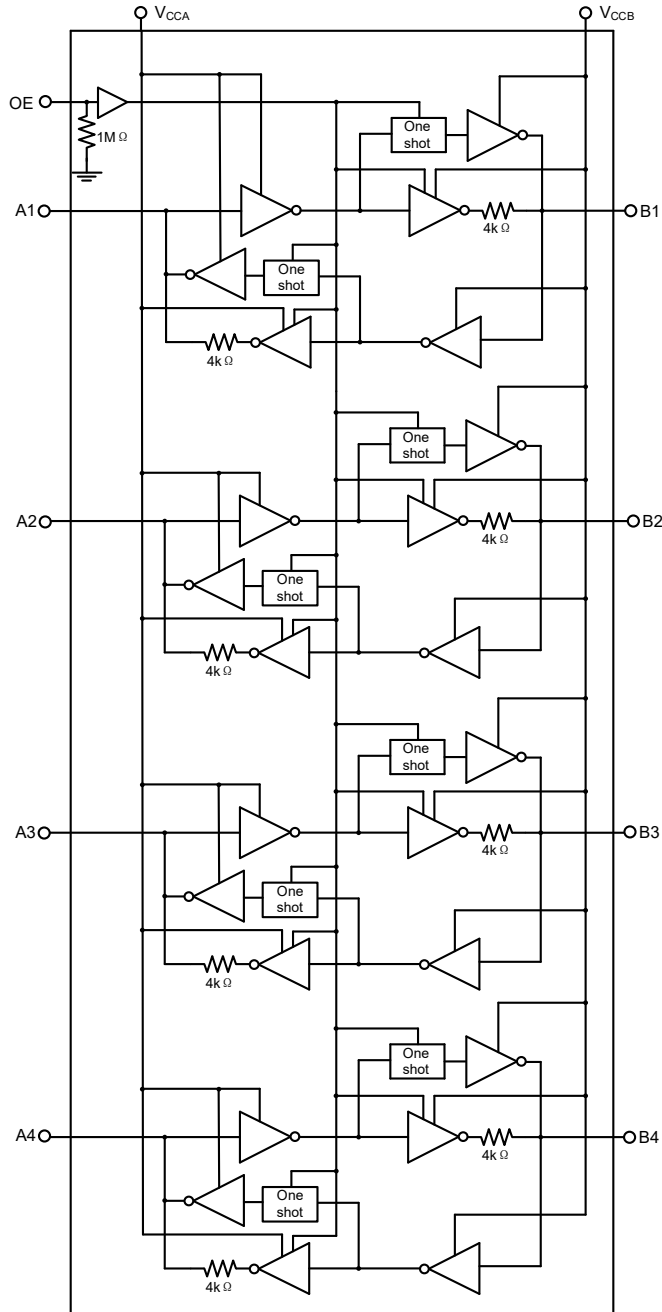


Figure 7. 1 Functional block diagram of NCAB0104

7.3. Architecture

The NCAB0104 architecture does not need a direction-control signal to control the direction of data flow from A to B or from B to A. In a DC state, the output drivers of the device maintain high or low, but are designed to be weak, so the output drivers can be overdriven by an external driver when data on the bus flows in the opposite direction.

The output one-shots detect rising or falling edges on the A or B ports. During a rising edge, the one-shot turns on the PMOS transistors (T1, T3) for a short duration which speeds up the low-to-high transition. Similarly, during a falling edge, the one-shot turns on the NMOS transistors (T2, T4) for a short duration, which speeds up the high-to-low transition. The typical output impedance during output transition is 80 Ω at VCCO = 1.2 V to 1.8 V, 75 Ω at VCCO = 1.8 V to 3.3 V, and 70 Ω at VCCO = 3.3 V to 5 V.

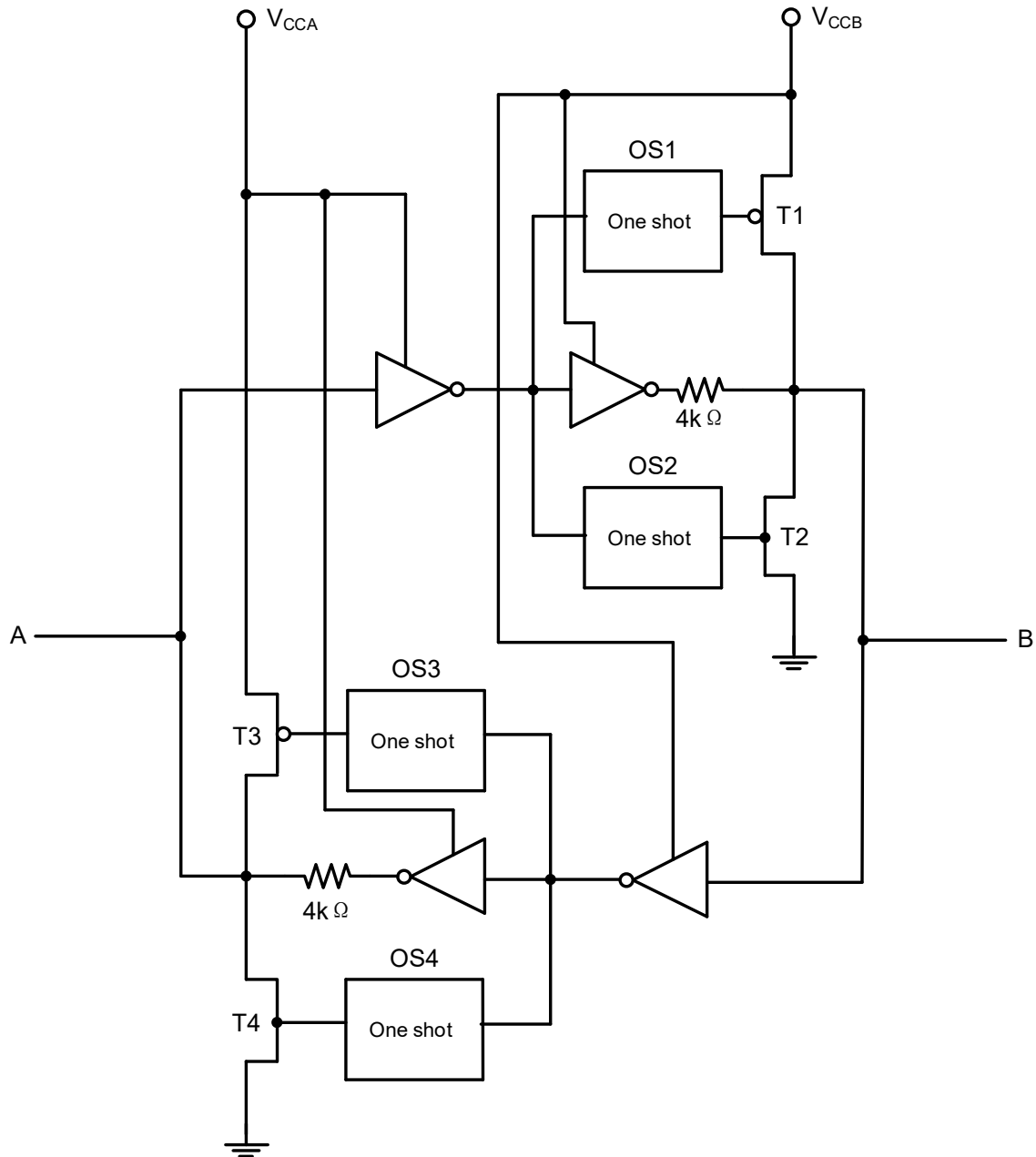


Figure 7. 2 Architecture of NCAB0104 I/O cell

7.4. Input Driver Requirements

For proper operation, the device driving the data I/Os of the NCAB0104 device must have driving strength of at least ± 2 mA.

7.5. Power Up

During operation V_{CCA} must never be higher than V_{CCB} , however during power-up $V_{CCA} \geq V_{CCB}$ does not damage the device, so any power supply can be ramped up first. There is no special power-up sequencing required. The NCAB0104 includes circuitry that disables all output ports when either V_{CCA} or V_{CCB} is switched off.

7.6. Device Functional Modes

The NCAB0104 device has an OE input that is used to disable the device by setting OE = low, which places all I/Os in the high-impedance state.

7.7. Enable and Disable

The NCAB0104 device has two functional modes, enabled and disabled. To disable the device, set the OE input low, which places all I/Os in a high impedance state. Setting the OE input high will enable the device.

The disable time (t_{dis}) indicates the delay between the time when the OE pin goes low and when the outputs actually enter the high-impedance state. The enable time (t_{en}) indicates the amount of time the user must allow for the one-shot circuitry to become operational after the OE pin is taken high.

7.8. Pull-up or Pull-down Resistors on I/O Lines

The device is designed to drive capacitive loads of up to 70 pF. The output drivers of the NCAB0104 device have low DC drive strength. If pullup or pulldown resistors are connected externally to the data I/Os, their values must be kept higher than 50 k Ω to ensure that they do not contend with the output drivers of the NCAB0104 device.

For the same reason, the NCAB0104 device must not be used in applications such as I²C or 1-Wire where an open-drain driver is connected on the bidirectional data I/O. For these applications, please use device NCAS0104 of NOVOSENSE.

8. Typical Application

The NCAB0104 device can be used in level-translation applications for interfacing devices or systems operating at different interface voltages with one another. It can only translate push-pull CMOS logic outputs. If for open-drain signal translation, please refer to NCAS0104 of NOVOSENSE. Any external pulldown or pullup resistors are recommended larger than 50 kΩ.

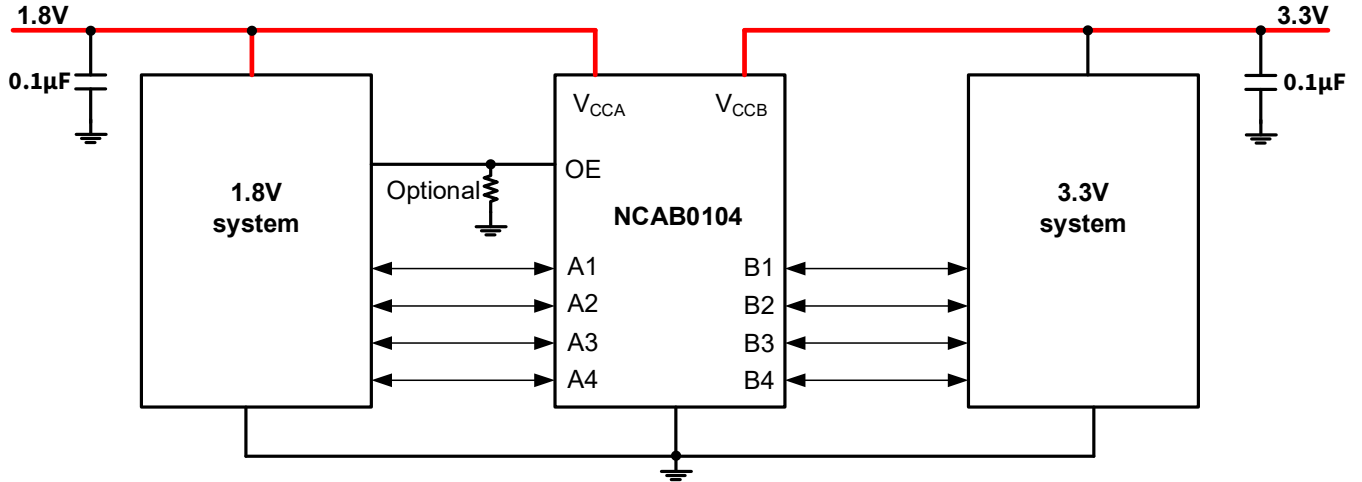


Figure 8. 1 Typical application of NCAB0104

9. Package Information

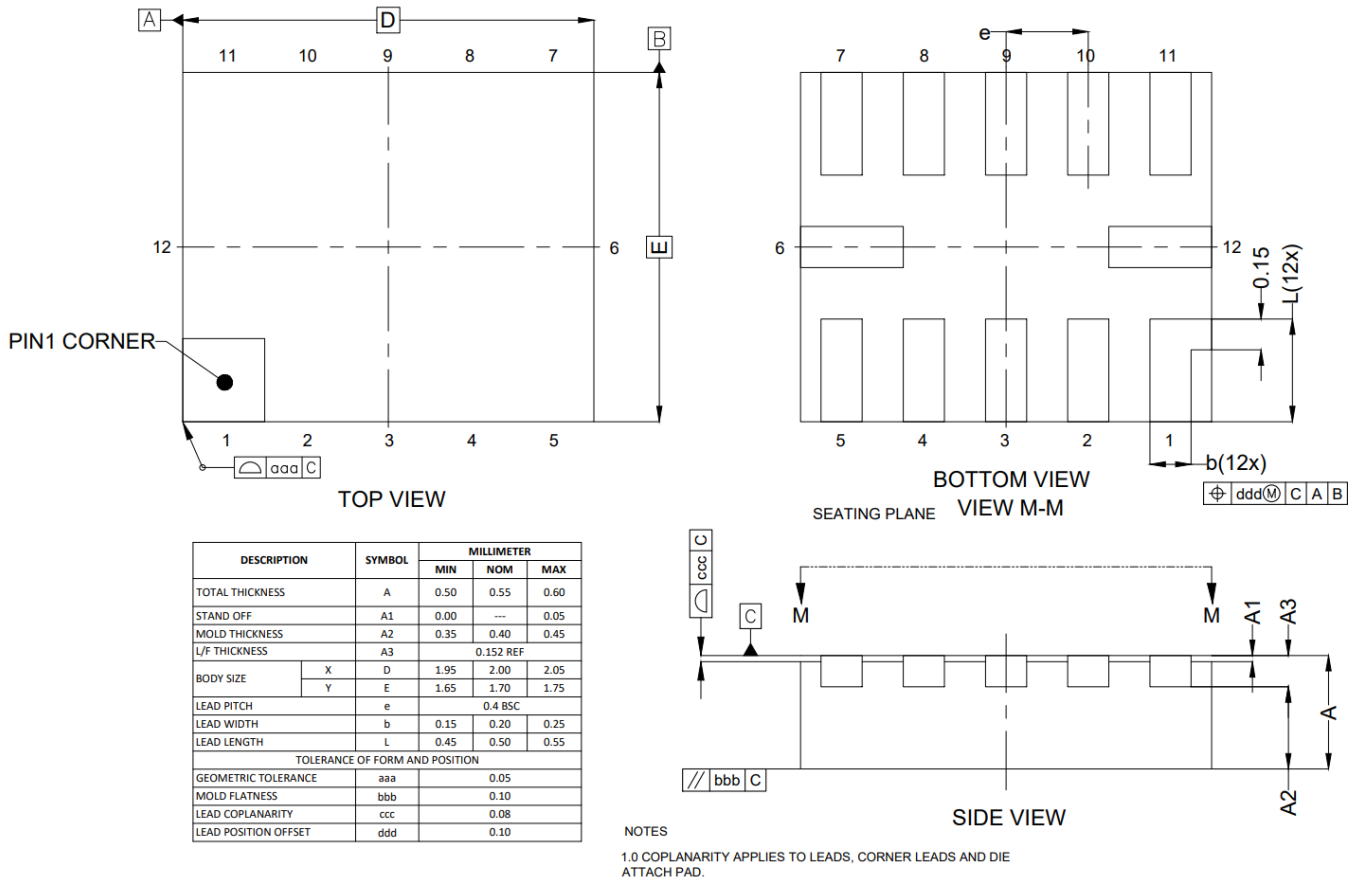


Figure 9. 1 UQFN12 package shape and dimension in millimeters for NCAB0104-DQBDR

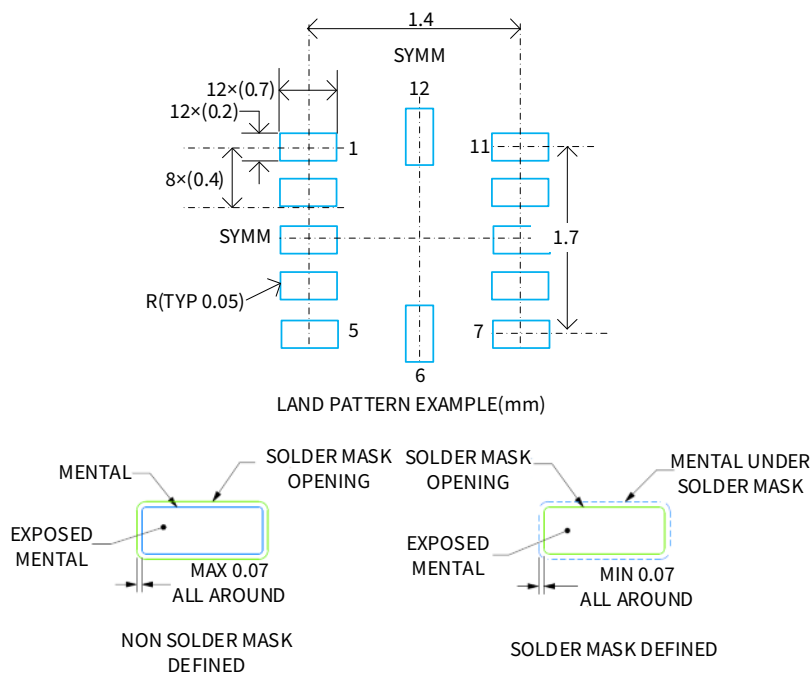


Figure 9. 2 UQFN12 package board layout example for NCAB0104-DQBDR

10. Ordering Information

<i>Part Number</i>	<i>Junction Temperature</i>	<i>MSL</i>	<i>Package</i>	<i>SPQ</i>
NCAB0104-DQBDR	-40 °C to 85 °C	3	UQFN12	3000

11. Tape and Reel Information

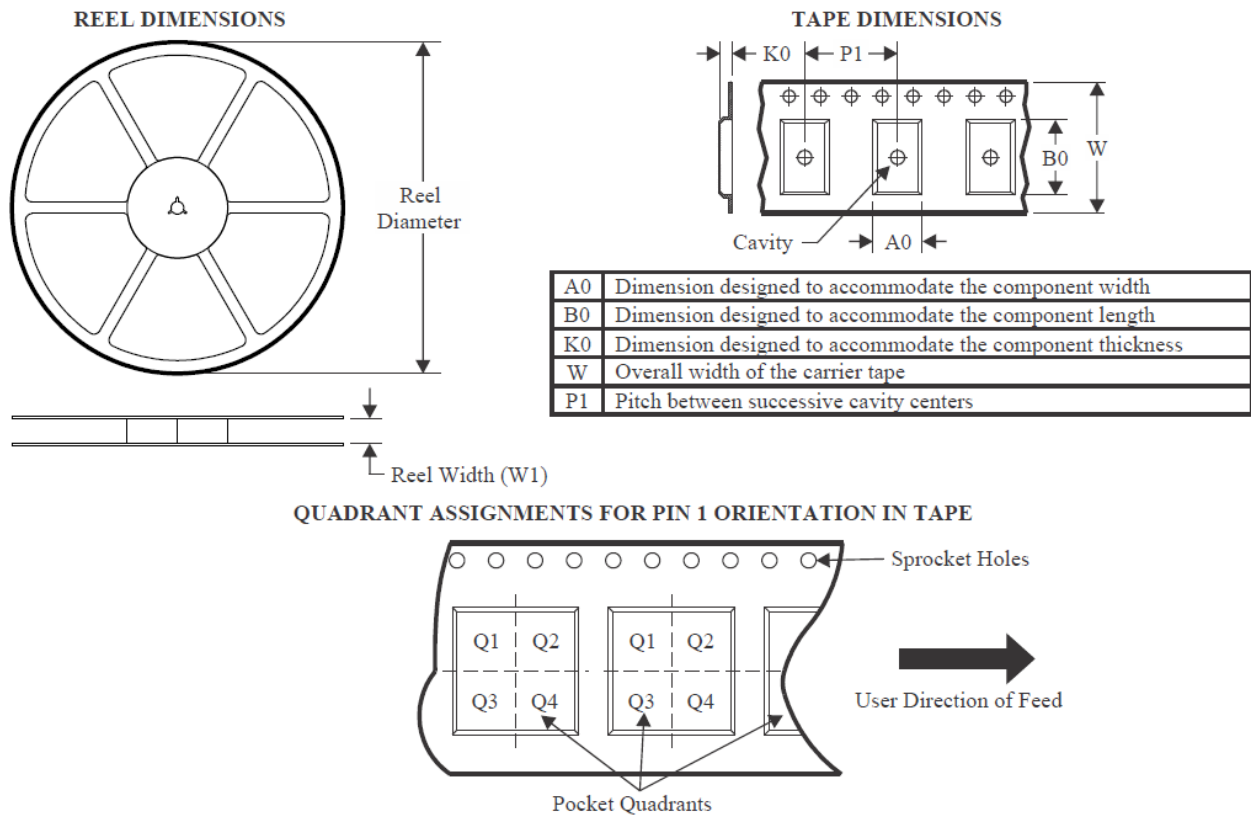


Figure 11. 1 Tape and Reel Information in millimeters

Devices	Package	Pins	Reel Diameter (mm)	Reel Width W1 (mm)	A0 (mm)	B0 (mm)	K0 (mm)	P1 (mm)	W (mm)	Pin1 Quadrant
NCAB0104-DQBDR	UQFN12	12	178	9.5	1.9	2.2	0.65	4.0	8.0	Q1

12. Revision History

Revision	Description	Date
1.0	Initial version for NCAB0104-DQBDR.	2025/7/17

IMPORTANT NOTICE

The information given in this document (the “Document”) shall in no event be regarded as any warranty or authorization of, express or implied, including but not limited to accuracy, completeness, merchantability, fitness for a particular purpose or infringement of any third party’s intellectual property rights.

Users of this Document shall be solely responsible for the use of NOVOSENSE’s products and applications, and for the safety thereof. Users shall comply with all laws, regulations and requirements related to NOVOSENSE’s products and applications, although information or support related to any application may still be provided by NOVOSENSE.

This Document is provided on an “AS IS” basis and is intended only for skilled developers designing with NOVOSENSE’ products. NOVOSENSE reserves the rights to make corrections, modifications, enhancements, improvements or other changes to the products and services provided without notice. NOVOSENSE authorizes users to use this Document exclusively for the development of relevant applications or systems designed to integrate NOVOSENSE’s products. No license to any intellectual property rights of NOVOSENSE is granted by implication or otherwise. Using this Document for any other purpose, or any unauthorized reproduction or display of this Document is strictly prohibited. In no event shall NOVOSENSE be liable for any claims, damages, costs, losses or liabilities arising out of or in connection with this Document or the use of this Document.

For further information on applications, products and technologies, please contact NOVOSENSE (www.novosns.com).

Suzhou NOVOSENSE Microelectronics Co., Ltd