

Dual Bidirectional I2C Bus and SMBus Voltage-Level Translator

Datasheet (EN) 1.3

Product Overview

The NCA9306 device is a dual bidirectional I²C and SMBus voltage-level translator with an enable (EN) input, and is operational from 1.2V to 3.3V V_{REF1} and 1.8V to 5.5V V_{REF2} . The NCA9306 device allows bidirectional voltage translations between 1.2 V and 5 V, without the use of a direction pin. The low ON-state resistance (R_{ON}) of the switch allows connections to be made with minimal propagation delay. When EN is high, the translator switch is ON, and the SCL1 and SDA1 I/O are connected to the SCL2 and SDA2 I/O, respectively, allowing bidirectional data flow between ports. When EN is low, the translator switch is off, and a high-impedance state exists between ports.

In addition to voltage translation, the NCA9306 device can be used to isolate a 400kHz bus from a 100kHz bus by controlling the EN pin to disconnect the slower bus during fast-mode communication.

Key Features

- 2 Bit bidirectional translator for SDA and SCL lines in mixed-mode I²C Applications
- I²C and SMBus Compatible
- Less than 1.5-ns Maximum Propagation Delay to Accommodate Standard-mode and Fast-mode I²C Devices and Multiple Masters
- Allows Voltage-level Translation Between
 - 1.2V V_{REF1} and 1.8V, 2.5V, 3.3V, or 5V V_{REF2}
 - 1.8V V_{REF1} and 2.5V, 3.3V, or 5V V_{REF2}
 - 2.5V V_{REF1} and 3.3V or 5V V_{REF2}
 - 3.3V V_{REF1} and 5V V_{REF2}
- Provides Bidirectional Voltage Translation with no Direction Pin
- Low 3.5Ω ON-state Resistance Between Input and Output Ports Provides Less Signal Distortion

- Open-drain I²C I/O ports (SCL1, SDA1, SCL2, and SDA2)
- 5V Tolerant I²C I/O Ports to Support Mixed-mode Signal Operation
- High-impedance SCL1, SDA1, SCL2, and SDA2 pins for EN = Low
- Lockup-free Operation for Isolation when EN = Low
- Flow-through Pinout for Ease of Printed-circuit board Trace Routing
- Latch-up Performance Exceeds 100 mA Per JESD 78, Class II
- ESD Protection Exceeds JESD 22
 - 2000V Human-Body Model (A114-A)
 - 1000V Charged-Device Model (C101)

Applications

- I²C, SMBus, PMBus, MDIO, UART, low-speed SDIO, GPIO, and other two-signal interfaces
- Servers
- Routers (Telecom Switching Equipment)
- Personal Computers, Industrial, Automation

Device Information

Part Number	Package	Body Size
NCA9306-DVSR	VSSOP8	2.00mm × 2.30mm
NCA9306-DTSHR	TSSOP8	3.00mm × 3.00mm

Pinout

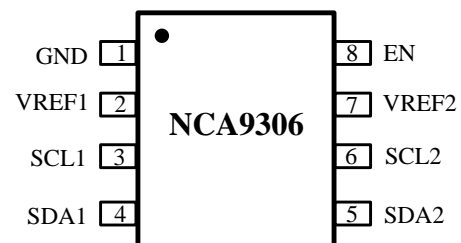


Figure 1. NCA9306 Pinout

INDEX

1. PIN CONFIGURATION AND FUNCTIONS	3
2. ABSOLUTE MAXIMUM RATINGS	3
3. ESD RATINGS (ELECTROSTATIC DISCHARGE PROTECTION)	4
4. RECOMMENDED OPERATING CONDITIONS	4
5. THERMAL INFORMATION	4
6. SPECIFICATIONS	5
6.1. ELECTRICAL CHARACTERISTICS.....	5
6.2. SWITCHING CHARACTERISTICS AC PERFORMANCE (TRANSLATING DOWN).....	5
6.3. SWITCHING CHARACTERISTICS AC PERFORMANCE (TRANSLATING UP).....	6
6.4. PARAMETER MEASUREMENT INFORMATION.....	7
7. FUNCTION DESCRIPTION	8
7.1. OVERVIEW.....	8
7.2. DEFINITION OF THRESHOLD VOLTAGE.....	8
7.3. CORRECT DEVICE SET UP.....	8
7.4. DISCONNECTING A SLAVE FROM THE MAIN I2C BUS USING THE EN PIN.....	9
7.5. SUPPORTING REMOTE BOARD INSERTION TO BACKPLANE WITH NCA9306.....	9
7.6. SWITCH CONFIGURATION.....	10
7.7. MASTER ON SIDE 1 OR SIDE 2 OF DEVICE.....	11
7.8. LDO AND NCA9306 CONCERNS.....	11
7.9. CURRENT LIMITING RESISTANCE ON VREF2.....	12
8. APPLICATION NOTE	13
8.1. APPLICATION INFORMATION.....	13
8.1.1. General Applications of I2C.....	13
8.2. TYPICAL APPLICATION.....	13
8.2.1. Enable (EN) Pin.....	13
8.2.2. Voltage Translation.....	13
8.3. DETAILED DESIGN PROCEDURE.....	15
8.3.1. Bidirectional Voltage Translation.....	15
8.3.2. Sizing Pullup Resistors.....	15
9. POWER SUPPLY RECOMMENDATIONS	15
10. LAYOUT	16
10.1. LAYOUT GUIDELINES.....	16
11. PACKAGE INFORMATION	17
12. ORDER INFORMATION	19
13. DOCUMENTATION SUPPORT	19
14. TAPE AND REEL INFORMATION	20
15. REVISION HISTORY	22

1. Pin Configuration and Functions

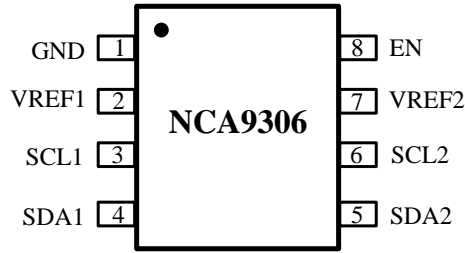


Figure 1-1 NCA9306 Package

Table 1-1 Pin Configuration and Description

Symbol	Pin No.	Description
GND	1	Ground, 0 V
V_{REF1}	2	Low-voltage-side reference supply voltage for SCL1 and SDA1
SCL1	3	Serial clock, low-voltage side
SDA1	4	Serial data, low-voltage side
SDA2	5	Serial data, high-voltage side
SCL2	6	Serial clock, high-voltage side
V_{REF2}	7	High-voltage-side reference supply voltage for SCL2 and SDA2
EN	8	Switch enable input

2. Absolute Maximum Ratings

Over operating free-air temperature range (unless otherwise noted)¹.

Parameters	Symbol	Min	Max	Unit	Conditions
Reference Voltage (1)	V_{REF1}	-0.5	6	V	
Reference bias Voltage (2)	$V_{bias(REF2)}$	-0.5	6	V	
Input/output Voltage	V_I/V_O	-0.5	6	V	
Input clamp current	I_{IK}		-50	mA	$V_I < 0V$
channel current (DC)	I_{CH}		128	mA	
Storage Temperature	T_{stg}	-65	150	°C	

¹ Stresses beyond those listed under Absolute Maximum Ratings may cause permanent damage to the device. Exposure to Absolute Maximum Rating condition for extended periods may affect device reliability.

3. ESD Ratings (Electrostatic Discharge Protection)

Parameters		Conditions	Value	Unit	Comments
HBM	Human Body Model	All pins	±2	kV	According to ANSI/ESDA/ JEDEC JS-001
CDM	Charged Device Model	All pins	±1	kV	According to ANSI/ESDA/ JEDEC JS-002

4. Recommended Operating Conditions

Parameters	Symbol	Min	Max	Unit	Conditions
Input/output voltage	V _{IO}	0	5.5	V	SCL1, SDA1, SCL2, SDA2
Reference voltage	V _{REF1}	0	5.5	V	
Reference voltage	V _{REF2}	0	5.5	V	
Enable input voltage	EN	0	5.5	V	
Pass switch current	I _{PASS}	-	64	mA	
Operating temperature	T _{opr}	-40	85	°C	

5. Thermal Information

Parameters	Symbol	VSSOP8	TSSOP8	Unit
IC Junction-to-Air Thermal Resistance	θ _{JA}	210.1	189.6	°C/W
Junction-to-case (top) thermal resistance	θ _{JC(top)}	81.9	119.6	°C/W
Junction-to-board thermal resistance	θ _{JB}	88.8	102.1	°C/W

6. Specifications

6.1. Electrical Characteristics

Over recommended operating ambient temperature range, unless otherwise noted. Typical specification are at $T_A=25^\circ\text{C}$.

Parameters	Symbol	Min	Typ	Max	Unit	Conditions
Input clamp voltage	V_{IK}	-1.2			V	$I_i=-18\text{mA}$, $EN=0$
Input leakage current	I_{IH}	-	-	1	μA	$V_i=5\text{V}$, $EN=0\text{V}$
Input capacitance	$C_{i(EN)}$		11		pF	$V_i=0\text{V}$ or 3V
Off capacitance	$C_{io(off)}$	-	4	6	pF	$V_o=0\text{V}$ or 3V , $EN=0\text{V}$; SDA _n , SCL _n
On capacitance	$C_{io(on)}$	-	10.5	12.5	pF	$V_o=0\text{V}$ or 3V , $EN=3\text{V}$; SDA _n , SCL _n
On-state resistance; SDA _n , SCL _n ¹	R_{ON}^2		1.6	3.0	Ω	$V_i=0$, $I_o=64\text{mA}$, $EN=4.5\text{V}$
			2.0	4.0	Ω	$V_i=0$, $I_o=64\text{mA}$, $EN=3\text{V}$
			2.6	5.0	Ω	$V_i=0$, $I_o=64\text{mA}$, $EN=2.3\text{V}$
			2.5	5.0	Ω	$V_i=0$, $I_o=15\text{mA}$, $EN=1.5\text{V}$
		1	3.9	7.0	Ω	$V_i=2.4\text{V}$, $I_o=15\text{mA}$, $EN=4.5\text{V}$
		20	55	70	Ω	$V_i=2.4\text{V}$, $I_o=15\text{mA}$, $EN=3\text{V}$
		20	46	60	Ω	$V_i=1.7\text{V}$, $I_o=15\text{mA}$, $EN=2.3\text{V}$

¹Measured by the voltage drop between the SCL1 and SCL2, or SDA1 and SDA2 terminals at the indicated current through the switch. ON-state resistance is determined by the lowest voltage of the two terminals.

²Guaranteed by design.

6.2. Switching Characteristics AC Performance (Translating Down)

Over recommended operating ambient temperature range, $EN = 3.3\text{V}$, $V_{IH} = 3.3\text{V}$, $V_{IL} = 0$, $V_M = 1.15\text{V}$ (unless otherwise noted) (see Figure 6-1).^{1,2}

Parameter	From (Input)	To (Output)	$C_L = 50\text{ pF}$		$C_L = 30\text{ pF}$		$C_L = 15\text{ pF}$		UNIT
			min	max	min	max	min	max	
t_{pth}	SDA2/SCL2	SDA1/SCL1	0	0.8	0	0.6	0	0.3	ns
t_{phi}			0	1.2	0	1	0	0.5	

Over recommended operating ambient temperature range, $EN = 2.5\text{V}$, $V_{IH} = 3.3\text{V}$, $V_{IL} = 0$, $V_M = 0.75\text{V}$ (unless otherwise noted) (see Figure 6-1).

Parameter	From (Input)	To (Output)	$C_L = 50\text{ pF}$		$C_L = 30\text{ pF}$		$C_L = 15\text{ pF}$		UNIT
			min	max	min	max	min	max	
t_{pth}	SDA2/SCL2	SDA1/SCL1	0	1	0	0.7	0	0.4	ns
t_{phi}			0	1.3	0	1	0	0.6	

¹Translating down: the high-voltage side driving toward the low-voltage side

²Guaranteed by design.

6.3. Switching Characteristics AC Performance (Translating Up)

Over recommended operating ambient temperature range, EN = 3.3 V, VIH = 2.3 V, VIL = 0, VT = 3.3 V, VM = 1.15 V, RL = 300Ω (unless otherwise noted) (see Figure 6-2)^{1,2}.

PARAMETER	FROM (INPUT)	TO (OUTPUT)	CL = 50 pF		CL = 30 pF		CL = 15 pF		UNIT
			min	max	min	max	min	max	
t _{plh}	SDA1/SCL1	SDA2/SCL2	0	0.9	0	0.6	0	0.4	ns
t _{phl}			0	1.4	0	1.1	0	0.7	

Over recommended operating ambient temperature range, EN = 2.5 V, VIH = 2.3 V, VIL = 0, VT = 3.3 V, VM = 0.75 V, RL = 300Ω (unless otherwise noted) (see Figure 6-2).

PARAMETER	FROM (INPUT)	TO (OUTPUT)	CL = 50 pF		CL = 30 pF		CL = 15 pF		UNIT
			min	max	min	max	min	max	
t _{plh}	SDA1/SCL1	SDA2/SCL2	0	1	0	0.6	0	0.4	ns
t _{phl}			0	1.3	0	1.3	0	0.8	

¹Translating up: the low-voltage side driving toward the high-voltage side

²Guaranteed by design.

6.4. Parameter Measurement Information

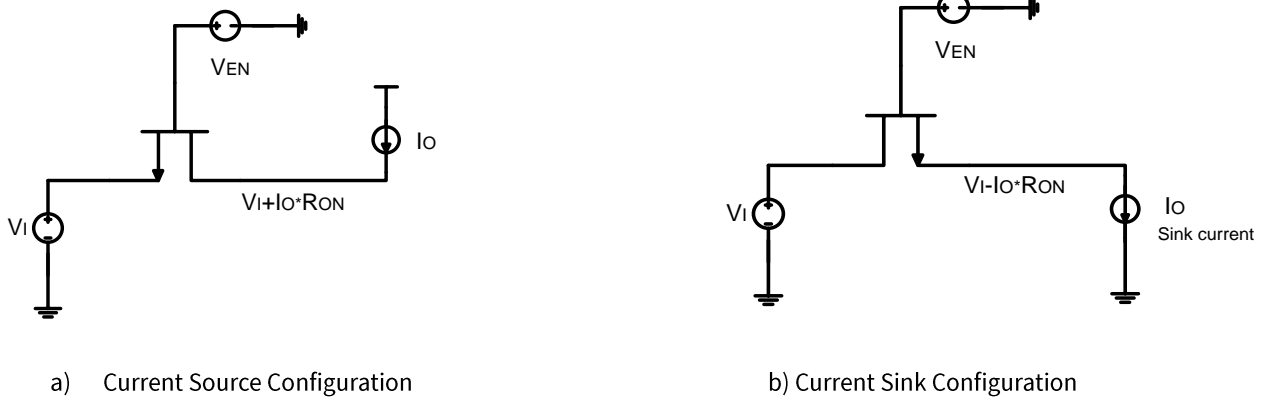
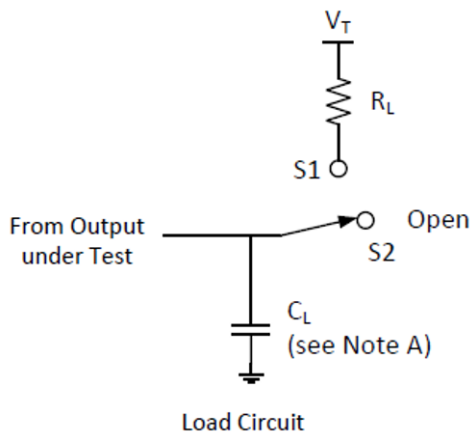
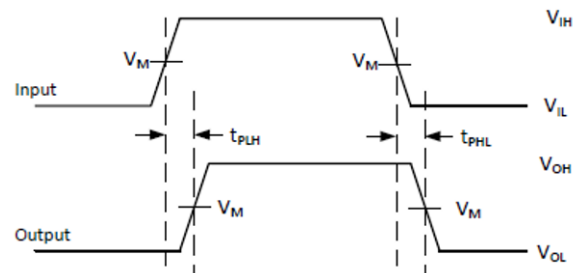


Figure 6-1 Current Source and Current Sink Configurations for RON Measurements



USAGE	SWITCH
Translating up	S1
Translating down	S2



- Notes:
- A. C_L includes probe and jig capacitance.
 - B. All input pulses are supplied by generators having the following characteristic: $PRR \leq 10\text{MHz}$, $Z_o = 50\Omega$, $t_r \leq 2\text{ns}$, $t_f \leq 2\text{ns}$.
 - C. The outputs are measured one at a time, with one transition per measurement.

Figure 6-2 Load Circuit for Outputs

7. Function Description

7.1. Overview

The NCA9306 device is a dual bidirectional I²C and SMBus voltage-level translator with an enable (EN) input and operates without use of a direction pin. The voltage supply range for V_{REF1} is 1.2 V to 3.3 V and the supply range for V_{REF2} is 1.8 V to 5.5 V.

The NCA9306 device can also be used to run two buses, one at 400-kHz operating frequency and the other at 100-kHz operating frequency. If the two buses are operating at different frequencies, the 100-kHz bus must be disconnected by using the EN pin when the 400-kHz operation of the main bus is required. If the master is running at 400 kHz, the maximum system operating frequency may be less than 400 kHz because of the delays added by the level shifter.

In I²C applications, the bus capacitance limit of 400 pF restricts the number of devices and bus length. The capacitive load on both sides of the NCA9306 device must be considered when approximating the total load of the system, ensuring the sum of both sides is under 400 pF.

Both the SDA and SCL channels of the NCA9306 device have the same electrical characteristics, and there is minimal deviation from one output to another in voltage or propagation delay. This is a benefit over discrete transistor voltage-translation solutions because the fabrication of the switch is symmetrical. The translator provides excellent ESD protection to lower-voltage devices and at the same time protects less-ESD-resistant devices.

7.2. Definition of threshold voltage

This document references a threshold voltage denoted as V_{th}, which appears multiple times throughout this document when discussing the NFET between V_{REF1} and V_{REF2}. The value of V_{th} is approximately 0.9 V at room temperature.

7.3. Correct Device Set Up

In a normal set up shown in Figure 7-1, the enable pin and V_{REF2} are shorted together and tied to a 200-kΩ resistor, and a reference voltage equal to V_{REF1} plus the FET threshold voltage is established. This reference voltage is used to help pass lows from one side to another more effectively while still separating the different pull up voltages on both sides.

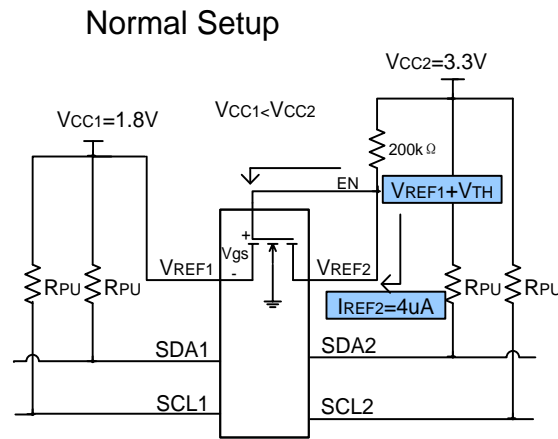


Figure 7-1 Normal Setup

Care should be taken to ensure V_{REF2} has an external resistor tied between it and V_{CC2}. If V_{REF2} is tied directly to the V_{CC2} rail without a resistor, then there is no external resistance from the V_{CC2} to V_{CC1} to limit the current such as in Figure 7-2. This effectively looks like a low impedance path for current to travel through and potentially break the pass FET if the current flowing through the pass FET is larger than the absolute maximum continuous channel current specified in section 2.0. The continuous channel current is larger with a higher voltage difference between V_{CC1} and V_{CC2}.

Figure 7-2 shows an improper set up. If V_{CC2} is larger than V_{CC1} but less than V_{th}, the impedance between V_{CC1} and V_{CC2} is high resulting in a low drain to source current, which does not cause damage to the device. Concern arises when V_{CC2} becomes larger than V_{CC1} by

V_{th} . During this event, the NFET turns on and begin to conduct current. This current is dependent on the gate to source voltage and drain to source voltage.

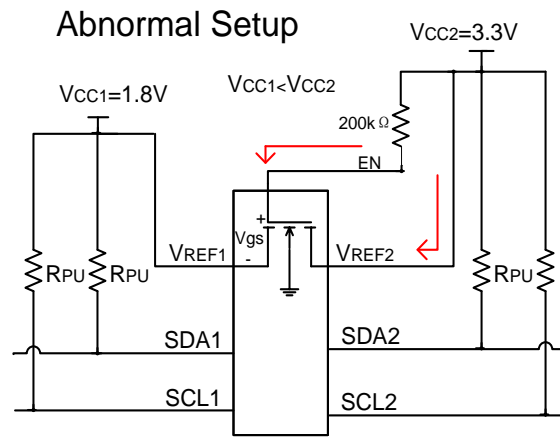


Figure 7-2 Abnormal Setup

7.4. Disconnecting a Slave from the Main I2C Bus Using the EN Pin

NCA9306 can be used as a switch to disconnect one side of the device from the main I²C bus. This can be advantageous in multiple situations. One instance of this situation is if there are devices on the I²C bus which only supports fast mode (400 kHz) while other devices on the bus support fast mode plus (1 MHz). An example of this is displayed in Figure 7-3.



Figure 7-3 Example of an I²C bus with multiple supported frequencies

In this situation, if the master is on the 1 MHz side, then communicating at 1 MHz should not be attempted if NCA9306 were enabled. It needs to be disabled for NCA9306 to avoid possibly glitching state machines in devices which were designed to operate correctly at 400 kHz or slower. When NCA9306 is disabled, the master can communicate with the 1 MHz devices without disturbing the 400 kHz bus. When the NCA9306 is enabled, communication across both sides at 400 kHz is acceptable.

7.5. Supporting Remote Board Insertion to Backplane with NCA9306

Another situation where NCA9306 is advantageous when using its enable feature is when a remote board with I²C lines needs to be attached to a main board (backplane) with an I²C bus such as in Figure 7-4. If connecting a remote board to a backplane is not done properly, the connection could result in data corruption during a transaction, or the insertion could generate an unintended pulse on the SCL line, which could glitch an I²C device state machine causing the I²C bus to get stuck.

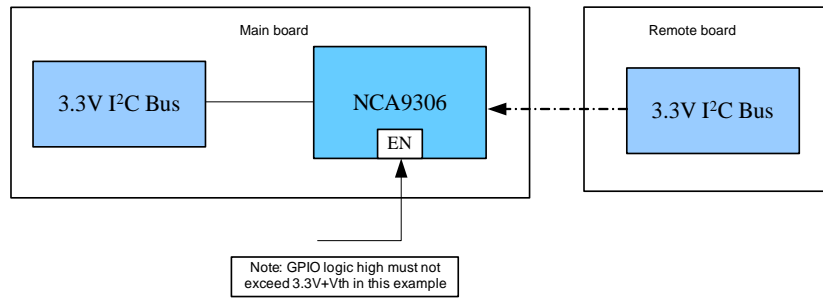
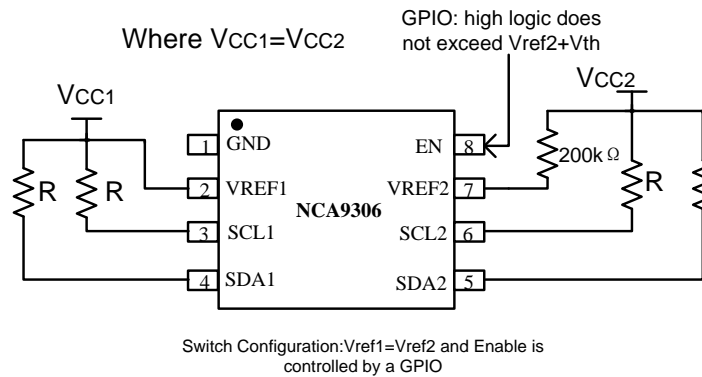


Figure 7-4 An example of connecting a remote board to a main board (backplane)

NCA9306 can be used to support this application because it can be disabled while making the connection. Then it is enabled once the remote board is powered on and the buses on both sides are IDLE.

7.6. Switch Configuration

NCA9306 has the capability of being used with its V_{REF1} voltage equal to V_{REF2} . This essentially turns the device from a translator to a device which can be used as a switch, and in some situations this can be useful. The switch configuration is shown in Figure 7-5 and translation mode is shown in Figure 7-6.



Switch Configuration: $V_{REF1} = V_{REF2}$ and Enable is controlled by a GPIO

Figure 7-5 Switch Configuration

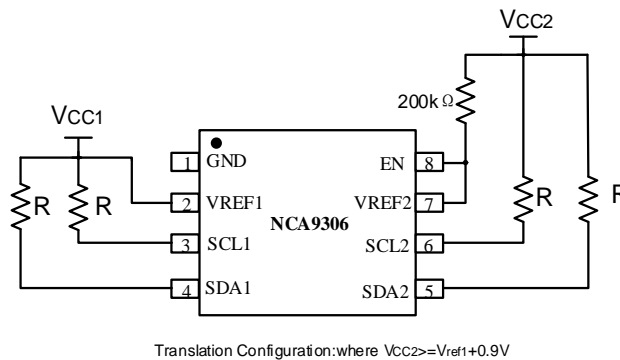


Figure 7-6 Translation Configuration

When NCA9306 is in the switch configuration ($V_{REF1} = V_{REF2}$), the propagation delays are different compared to the translator configuration. Look at the propagation delays, if the pull up resistance and capacitance on both sides of the bus are equal, then in

switch mode the NCA9306 has the same propagation delay from side one to two and side two to one. The propagation delays become lower when V_{CC1}/V_{CC2} is larger. For example, the propagation delay at 1.8 V is longer than at 5 V in the switching configuration. When NCA9306 is in translation mode, side one propagates lows to side two faster than side two can propagate lows to side 1. This time difference becomes larger the larger the difference between V_{CC2} and V_{CC1} becomes.

7.7. Master on Side 1 or Side 2 of Device

I²C and SMBus are bidirectional protocol meaning devices on the bus can both transmit and receive data. NCA9306 was designed to allow for signals to be able to be transmitted from either side, thus allowing for the master to be able to placed on either side of the device. Figure 7-7 shows the master on Side 1 or Side 2 of NCA9306.

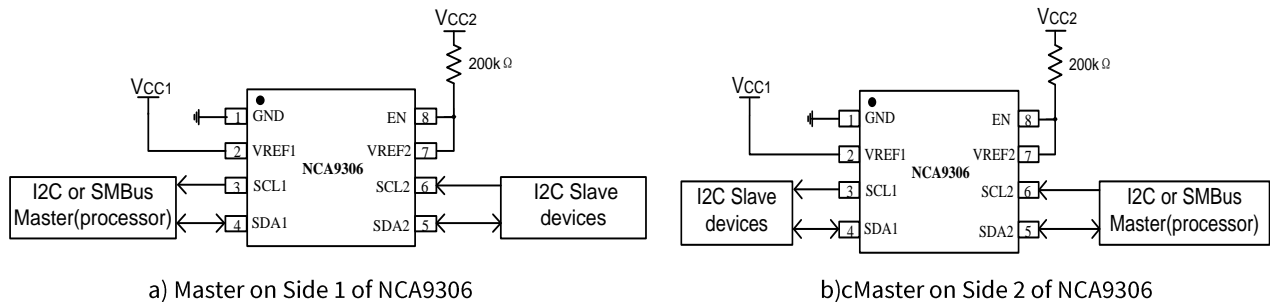


Figure 7-7 Master on Side 1 or Side 2 of NCA9306

7.8. LDO and NCA9306 Concerns

The V_{REF1} pin can be supplied by a low-dropout regulator (LDO), but in some cases the LDO may lose its regulation because of the bias current from V_{REF2} to V_{REF1} . If the LDO cannot sink the bias current, then the current has no other paths to ground and instead charges up the capacitance on the V_{REF1} node (both external and parasitic). This results in an increase in voltage on the V_{REF1} node. If no other paths for current to flow are established (such as back biasing of body diodes or clamping diodes through other devices on the V_{REF1} node), then the V_{REF1} voltage ends up stabilizing when V_{GS} of the pass FET is equal to V_{th} . This means V_{REF1} node voltage is $V_{CC2} - V_{th}$. Note that any slaves/masters running off of the LDO now see the $V_{CC2} - V_{th}$ voltage which may cause damage to those slaves/masters if they are not rated to handle the increased voltage.

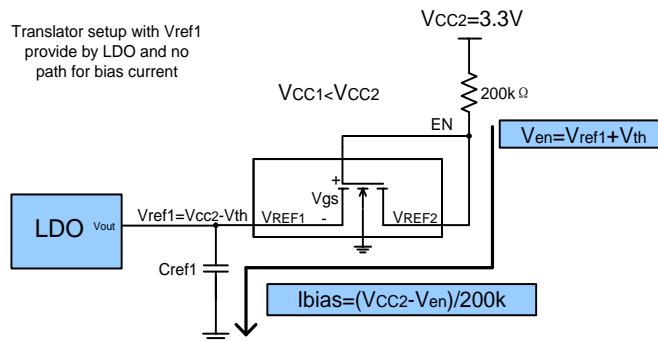


Figure 7-8 Example of no leakage current path when using LDO

To ensure LDO does not lose regulation due to the bias current of NCA9306, a weak pull down resistor can be placed on V_{REF1} to ground to provide a path for the bias current to travel. The recommended pull down resistor is calculated by Equation 4 where 0.75 gives about 25% margin for error incase bias current increases during operation.

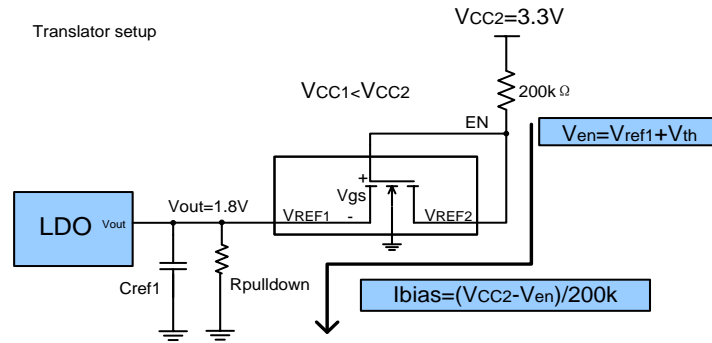


Figure 7-9 Example with Leakage current path when using an LDO

$$V_{en} = V_{REF1} + V_{th} \tag{1}$$

where

V_{th} is approximately 0.9 V

$$I_{bias} = (V_{CC2} - V_{en})/200k \tag{2}$$

$$R_{pulldown} = V_{OUT}/I_{bias} \tag{3}$$

$$\text{Recommended } R_{pulldown} = R_{pulldown} \times 0.75 \tag{4}$$

7.9. Current Limiting Resistance on VREF2

The resistor is used to limit the current between V_{REF2} and V_{REF1} (denoted as R_{CC}) and helps to establish the reference voltage on the enable pin. The 200k resistor can be changed to a lower value; however, the bias current proportionally increases as the resistor decreases.

$$I_{bias} = (V_{CC2} - V_{en})/R_{CC} \tag{5}$$

where

V_{th} is approximately 0.9V

$$V_{en} = V_{REF1} + V_{th}$$

Keep in mind R_{CC} should not be sized low enough that I_{CC} exceeds the absolute maximum continuous channel current specified in Equation 6.

$$R_{CC(min)} \geq (V_{CC2} - V_{en})/0.128 \tag{6}$$

where

V_{th} is approximately 0.9V

$$V_{en} = V_{REF1} + V_{th}$$

8. Application Note

8.1. Application Information

8.1.1. General Applications of I2C

As with the standard I²C system, pullup resistors are required to provide the logic-high levels on the translator bus. The size of these pullup resistors depends on the system, but each side of the repeater must have a pullup resistor. The device is designed to work with standard-mode and fast-mode I²C devices in addition to SMBus devices. Standard-mode I2C devices only specify 3 mA in a generic I2C system where standard-mode devices and multiple masters are possible. Under certain conditions, high termination currents can be used. When the SDA1 or SDA2 port is low, the clamp is in the ON state, and a low-resistance connection exists between the SDA1 and SDA2 ports. Assuming the higher voltage is on the SDA2 port when the SDA2 port is high, the voltage on the SDA1 port is limited to the voltage set by VREF1. When the SDA1 port is high, the SDA2 port is pulled to the pullup supply voltage of the drain (V_{DPU}) by the pullup resistors. This functionality allows a seamless translation between higher and lower voltages selected by the user, without the need for directional control. The SCL1-SCL2 channel also functions in the same way as the SDA1-SDA2 channel.

8.2. Typical Application

8.2.1. Enable (EN) Pin

The NCA9306 device is a double-pole, single-throw switch in which the gate of the transistors is controlled by the voltage on the EN pin. In Figure 8-1, the NCA9306 device is always enabled when power is applied to V_{REF2}. In Figure 8-2, the device is enabled when a control signal from a processor is in a logic-high state.

8.2.2. Voltage Translation

The primary feature of the NCA9306 device is translating voltage from an I²C bus referenced to V_{REF1} up to an I²C bus referenced to V_{DPU}, to which V_{REF2} is connected through a 200-kΩ pullup resistor. Translation on a standard, open-drain I²C bus is achieved by simply connecting pullup resistors from SCL1 and SDA1 to V_{REF1} and connecting pullup resistors from SCL2 and SDA2 to V_{DPU}.

Figure 8-1 and Figure 8-2 show how these pullup resistors are connected in a typical application, as well as two options for connecting the EN pin.

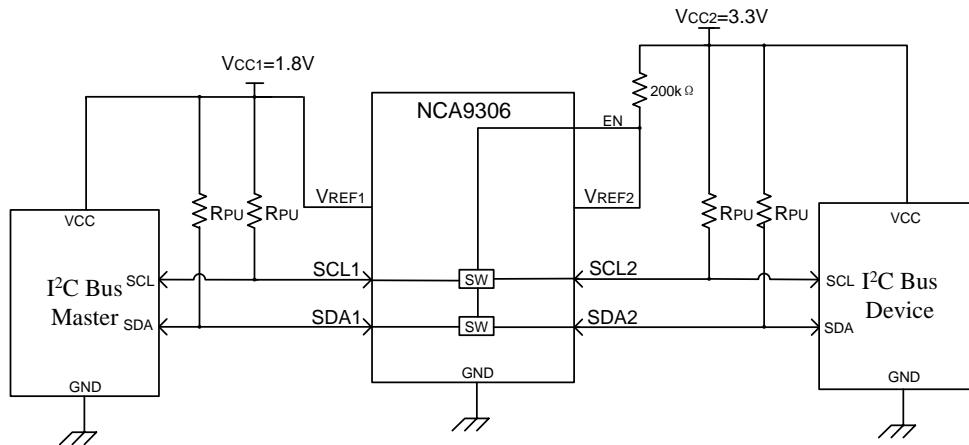


Figure 8-1 Typical Circuit (Switch Always Enabled)

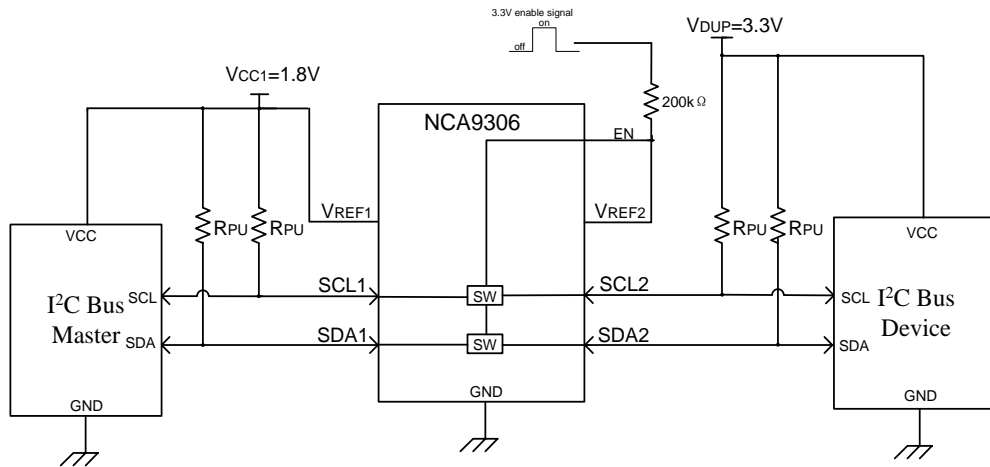


Figure 8-2 Typical Application Circuit (Switch Enable Control)

8.3. Detailed Design Procedure

8.3.1. Bidirectional Voltage Translation

For the bidirectional clamping configuration (higher voltage to lower voltage or lower voltage to higher voltage), the EN input must be connected to V_{REF2} and both pins pulled to high-side V_{DPU} through a pullup resistor (typically 200 k Ω). This allows V_{REF2} to regulate the EN input. A 100-pF filter capacitor connected to V_{REF2} is recommended. The I²C bus master output can be push-pull or open-drain (pullup resistors may be required) and the I²C bus device output can be open-drain (pullup resistors are required to pull the SCL2 and SDA2 outputs to V_{DPU}). However, if either output is push-pull, data must be unidirectional, or the outputs must be 3-state capable and be controlled by some direction-control mechanism to prevent high-to-low contentions in either direction. If both outputs are open-drain, no direction control is needed.

8.3.2. Sizing Pullup Resistors

Figure 8-3 and Figure 8-4 respectively show the maximum and minimum pullup resistance allowable by the I²C specification for standard-mode (100 kHz) and fast-mode (400 kHz) operation.

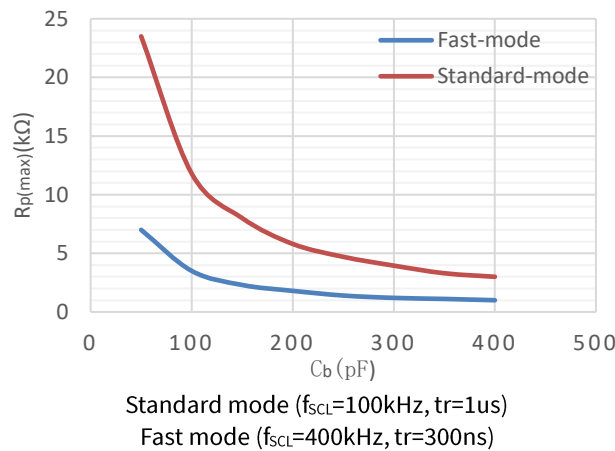


Figure 8-3 Maximum Pullup Resistance $R_{p(max)}$ vs Bus Capacitance C_b

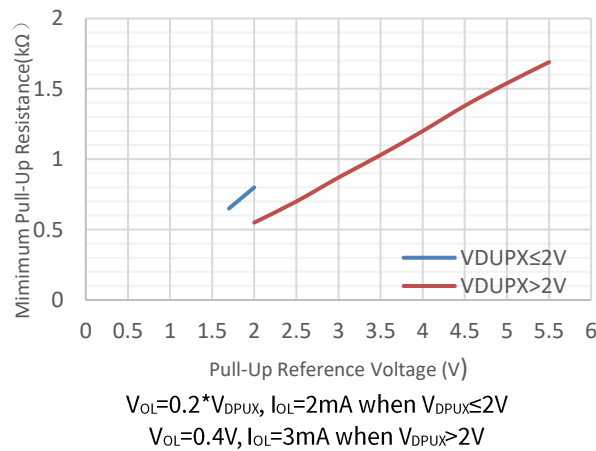


Figure 8-4 Minimum Pullup Resistance $R_{p(min)}$ vs Pullup Reference Voltage V_{DPUX}

9. Power Supply Recommendations

For supplying power to the NCA9306 device, the V_{REF1} pin can be connected directly to a power supply. The V_{REF2} pin must be connected to the V_{DPU} power supply through a 200-k Ω resistor. Failure to have a high impedance resistor between V_{REF2} and V_{DPU} results in excessive current draw and unreliable device operation. It is also worth noting, that in order to support voltage translation, the NCA9306 must have the EN and V_{REF2} pins shorted and then pulled up to V_{DPU} through a high-impedance resistor.

10. Layout

10.1. Layout Guidelines

For printed-circuit board (PCB) layout of the NCA9306 device, common PCB layout practices should be followed, but additional concerns related to high-speed data transfer such as matched impedances and differential pairs are not a concern for I²C signal speeds.

In all PCB layouts, it is a best practice to avoid right angles in signal traces, to fan out signal traces away from each other on leaving the vicinity of an integrated circuit (IC), and to use thicker trace widths to carry higher amounts of current that commonly pass through power and ground traces. The 100-pF filter capacitor should be placed as close to V_{REF2} as possible. A larger decoupling capacitor can also be used, but a longer time constant of two capacitors and the 200-kΩ resistor results in longer turn on and turn off times for the NCA9306 device.

These best practices are shown in Figure 10-1.

For the layout example provided in Figure 10-1, it would be possible to fabricate a PCB with only two layers by using the top layer for signal routing and the bottom layer as a split plane for power (VCC) and ground (GND). However, a four-layer board is preferable for boards with higher-density signal routing. On a four-layer PCB, it is common to route signals on the top and bottom layer, dedicate one internal layer to a ground plane, and dedicate the other internal layer to a power plane. In a board layout using planes or split planes for power and ground, vias are placed directly next to the surface-mount component pad, which must attach to VCC or GND, and the via is connected electrically to the internal layer or the other side of the board. Vias are also used when a signal trace must be routed to the opposite side of the board, but this technique is not demonstrated in Figure 10-1.

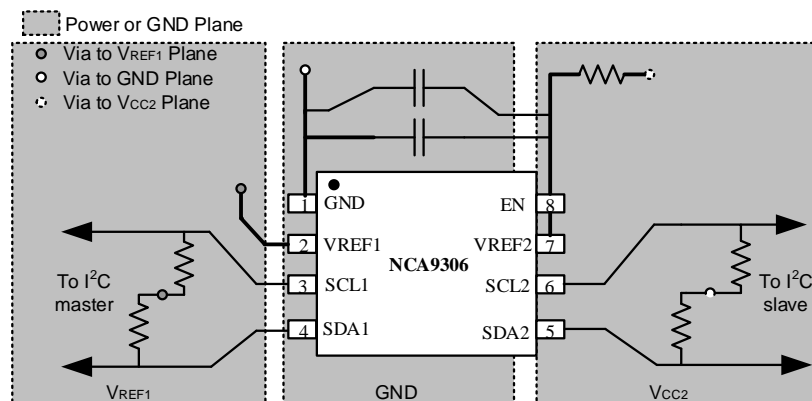


Figure 10-1 NCA9306 Layout Example

11. Package Information

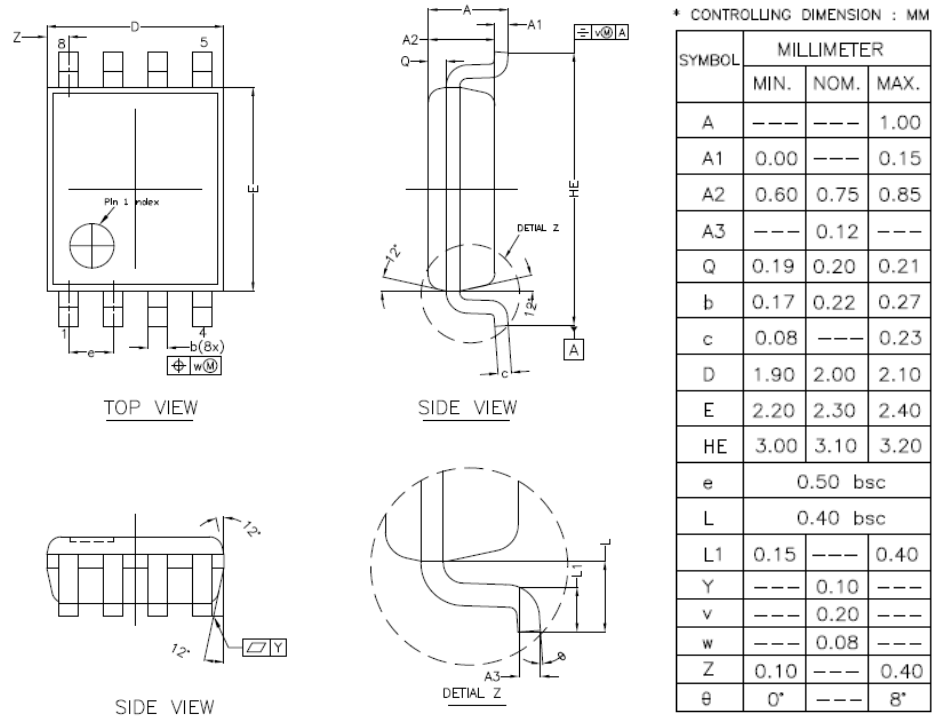
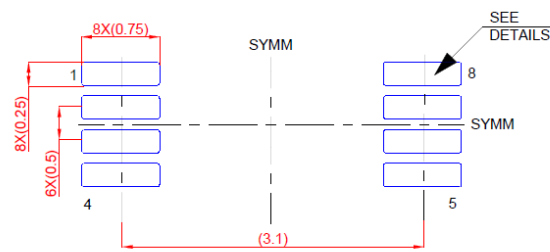
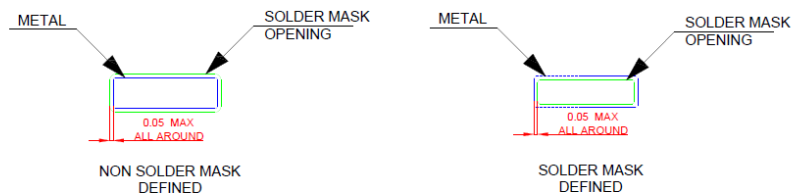


Figure 11-1 VSSOP8 Package Shape and Dimension in millimeters

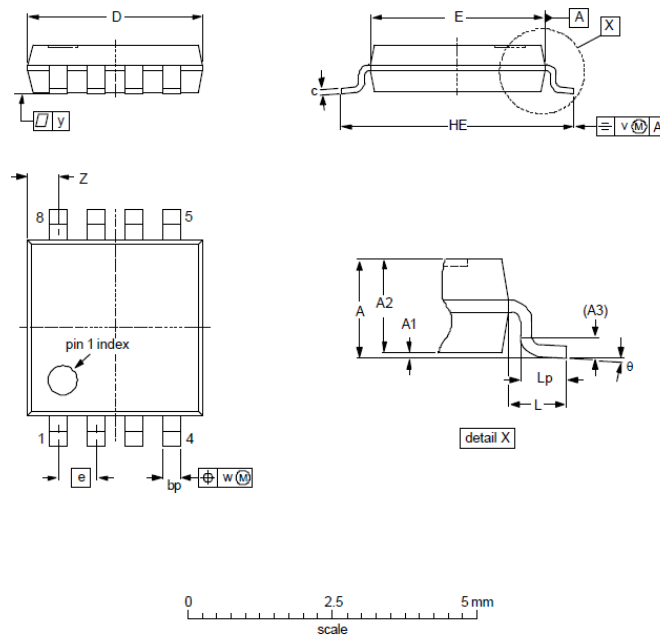


LAND PATTERN EXAMPLE(mm)



SOLDER MASK DETAILS

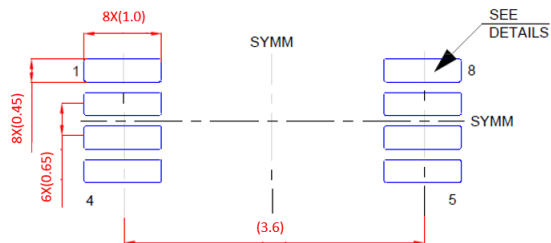
Figure 11-2 VSSOP8 Package Board Layout Example



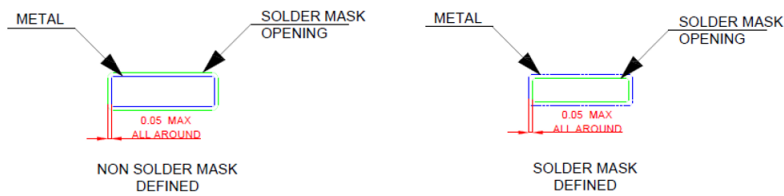
DIMENSIONS (mm are the original dimensions)

UNIT	A max.	A1	A2	A3	bp	c	D(1)	E(1)	e	HE	L	Lp	v	w	y	Z(1)	θ
mm	1.1	0.15 0.00	0.95 0.75	0.25	0.38 0.22	0.18 0.08	3.1 2.9	3.1 2.9	0.65	4.1 3.9	0.5	0.47 0.33	0.2	0.13	0.1	0.70 0.35	8° 0°

Figure 11-3 TSSOP8 Package Shape and Dimension in millimeters



LAND PATTERN EXAMPLE(mm)



SOLDER MASK DETAILS

Figure 11-4 TSSOP8 Package Board Layout Example

12. Order information

<i>Part Number</i>	<i>Temperature</i>	<i>MSL</i>	<i>Package Type</i>	<i>Package Drawing</i>	<i>Package Qty</i>
NCA9306-DVSR	-40 to 85°C	1	VSSOP8	VSSOP8	3000
NCA9306-DTSHR	-40 to 85°C	1	TSSOP8	TSSOP8	3000

13. Documentation Support

<i>Part Number</i>	<i>Product Folder</i>	<i>Datasheet</i>	<i>Technical Documents</i>
NCA9306	Click here	Click here	Click here

14. Tape and Reel Information

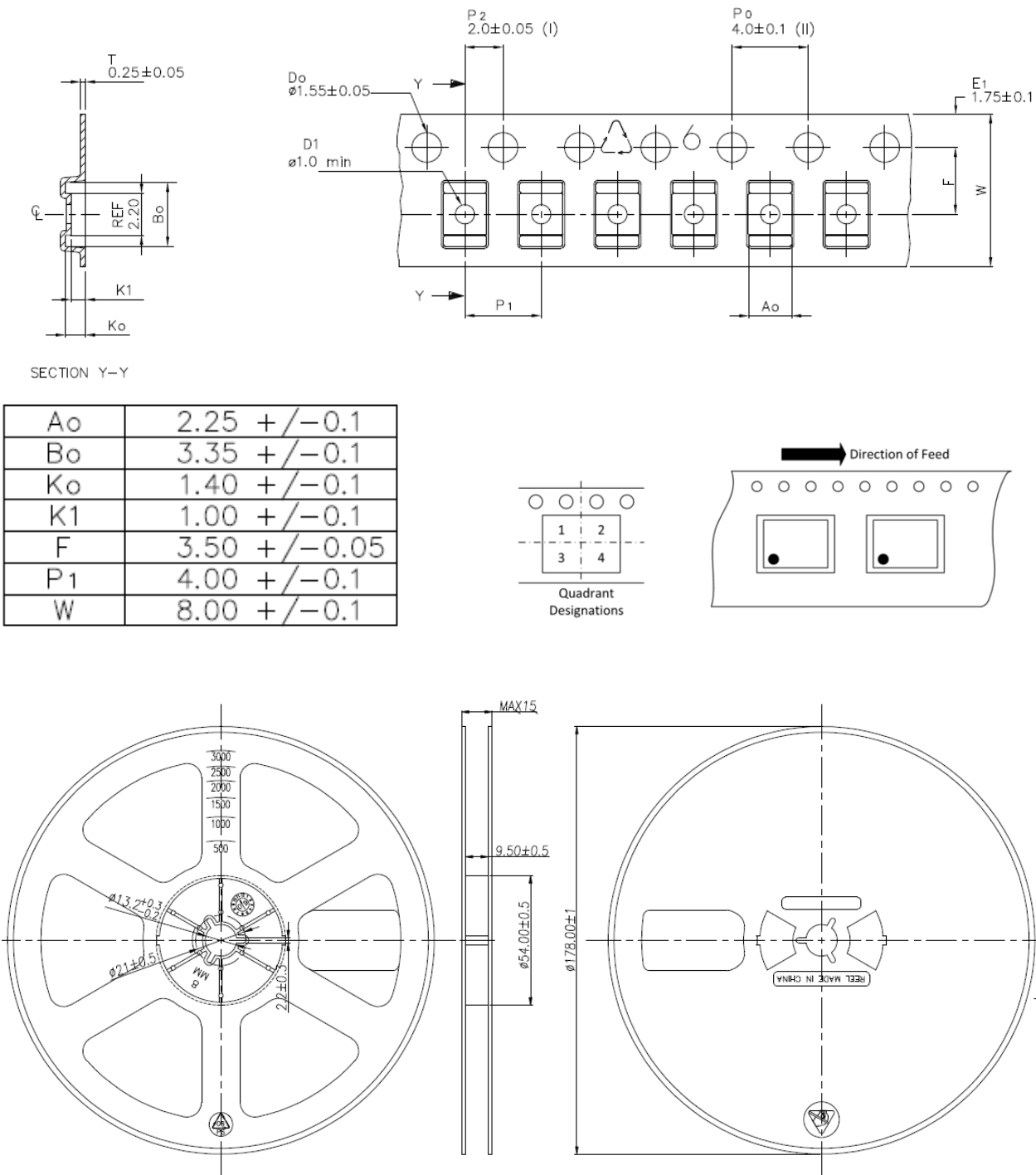
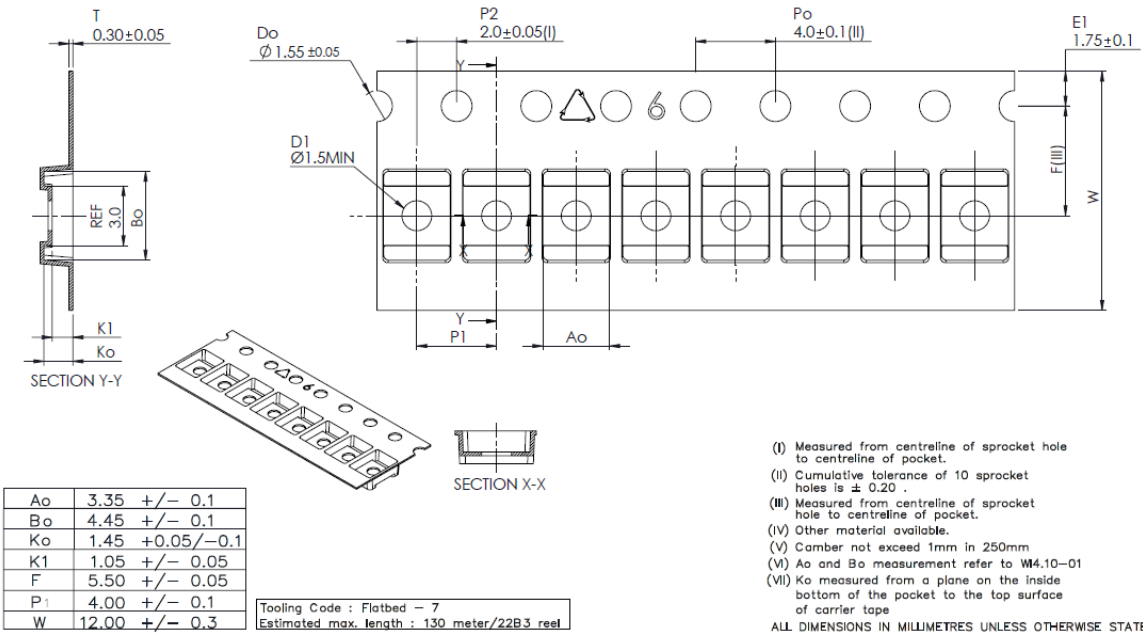
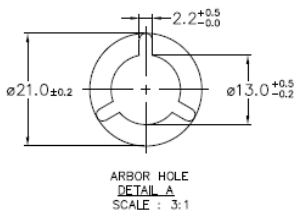
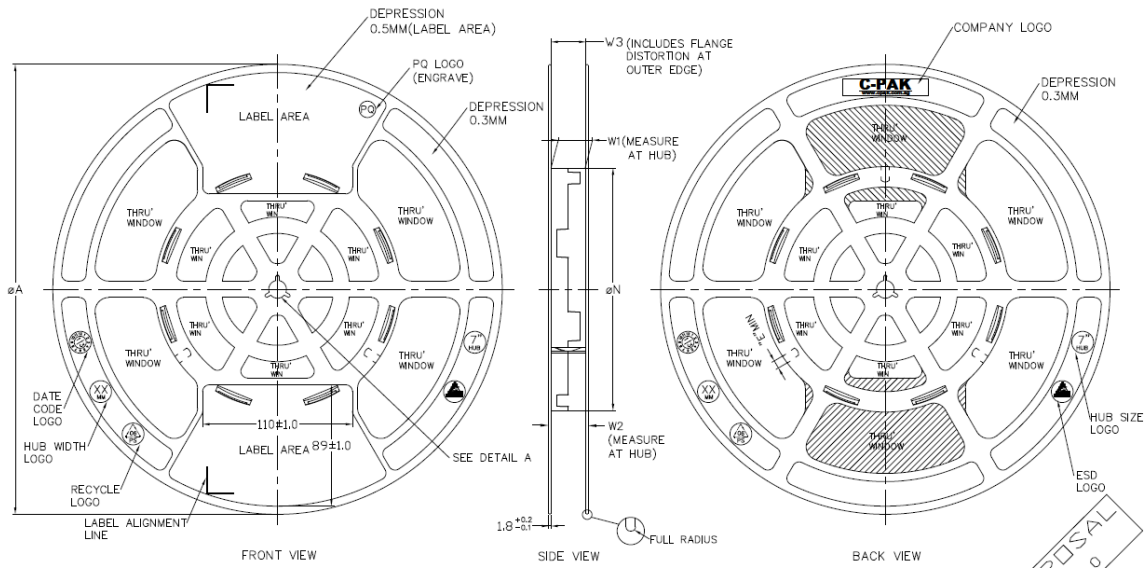


Figure 14-1 Tape and Reel Information of VSSOP8



- (I) Measured from centreline of sprocket hole to centreline of pocket.
 - (II) Cumulative tolerance of 10 sprocket holes is ± 0.20 .
 - (III) Measured from centreline of sprocket hole to centreline of pocket.
 - (IV) Other material available.
 - (V) Camber not exceed 1mm in 250mm
 - (VI) Ao and B0 measurement refer to W4.10-01
 - (VII) Ko measured from a plane on the inside bottom of the pocket to the top surface of carrier tape
- ALL DIMENSIONS IN MILLIMETRES UNLESS OTHERWISE STATE



PRODUCT SPECIFICATION						
TAPE WIDTH	∅A ±2.0	∅N ±2.0	W1	W2 (MAX)	W3	E (MIN)
08MM	330	178	8.4 ^{+0.15}	14.4	SHALL ACCOMMODATE TAPE WIDTH WITHOUT INTERFERENCE	5.5
12MM	330	178	12.4 ^{+0.15}	18.4		5.5
16MM	330	178	16.4 ^{+0.15}	22.4	5.5	
24MM	330	178	24.4 ^{+0.15}	30.4	5.5	
32MM	330	178	32.4 ^{+0.15}	38.4	5.5	

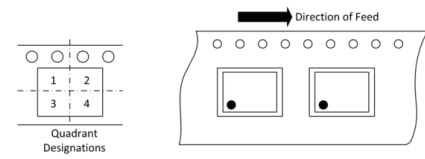


Figure 14-2 Tape and Reel Information of TSSOP8

15. Revision history

<i>Revision</i>	<i>Description</i>	<i>Date</i>
1.0	Initial version	2020/4/25
1.1	Added tape and reel information	2020/7/1
1.2	Changed tape and reel information of TSSOP8, and added Package Board Layout Example	2022/4/15
1.3	Updated TSSOP footprint	2023/12/28

IMPORTANT NOTICE

The information given in this document (the “Document”) shall in no event be regarded as any warranty or authorization of, express or implied, including but not limited to accuracy, completeness, merchantability, fitness for a particular purpose or infringement of any third party’s intellectual property rights.

Users of this Document shall be solely responsible for the use of NOVOSENSE’s products and applications, and for the safety thereof. Users shall comply with all laws, regulations and requirements related to NOVOSENSE’s products and applications, although information or support related to any application may still be provided by NOVOSENSE.

This Document is provided on an “AS-IS” basis and is intended only for skilled developers designing with NOVOSENSE’ products. NOVOSENSE reserves the rights to make corrections, modifications, enhancements, improvements or other changes to the products and services provided without notice. NOVOSENSE authorizes users to use this Document exclusively for the development of relevant applications or systems designed to integrate NOVOSENSE’s products. No license to any intellectual property rights of NOVOSENSE is granted by implication or otherwise. Using this Document for any other purpose, or any unauthorized reproduction or display of this Document is strictly prohibited. In no event shall NOVOSENSE be liable for any claims, damages, costs, losses or liabilities arising out of or in connection with this Document or the use of this Document.

For further information on applications, products and technologies, please contact NOVOSENSE (www.novosns.com).

Suzhou NOVOSENSE Microelectronics Co., Ltd